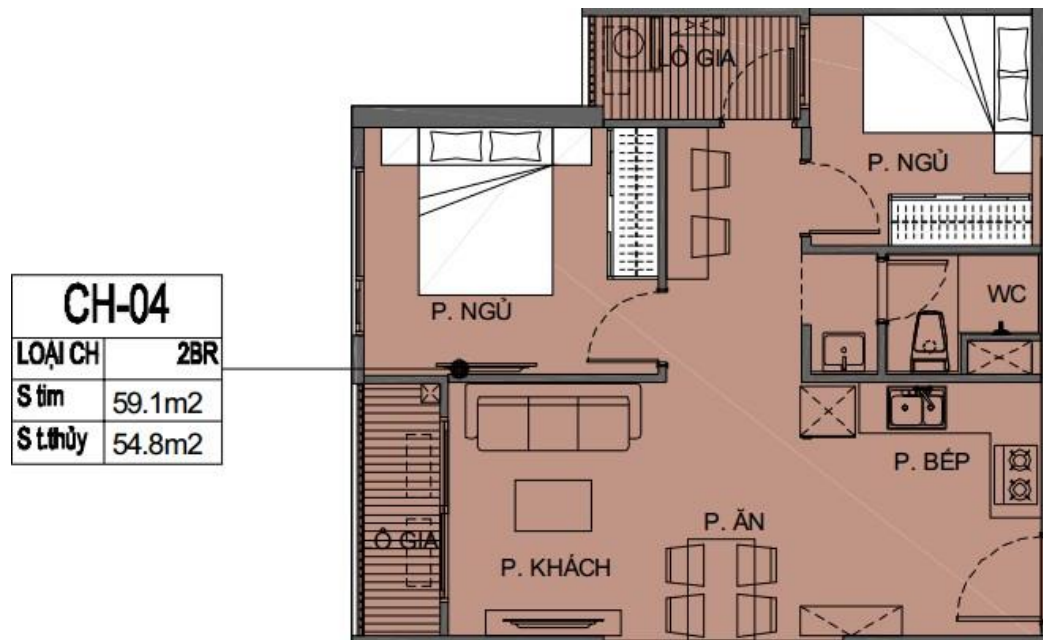
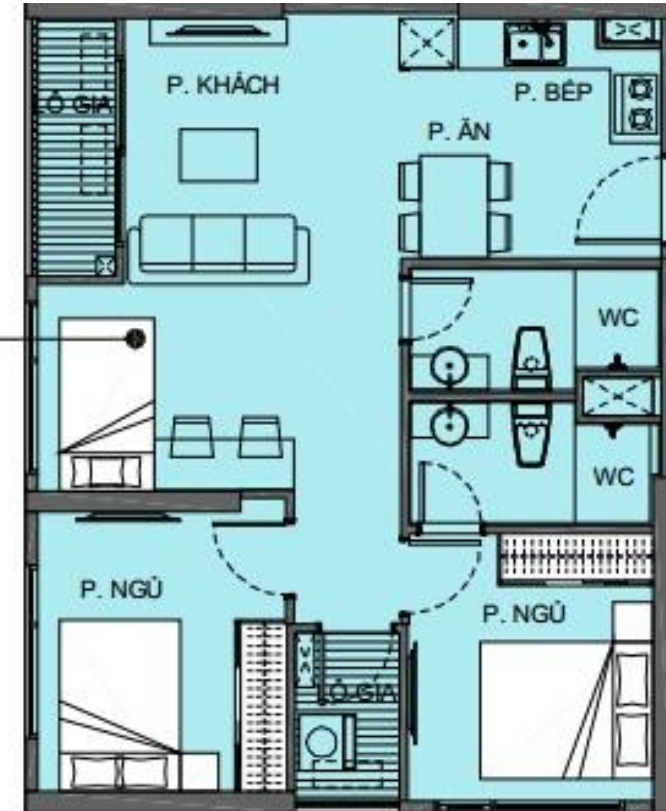


Typical Layout of Z Tower

Number of apartments for foreigners each floor: 4 apartments with 2 bedrooms (1WC) + 1 apartment with 2+1 bedrooms (2WC)



CH-16	
LOẠI CH	2BR+
S tim	69.2m ²
S thùy	63.1m ²



Just for reference, the official information shall be released after the open-for-sale ceremony

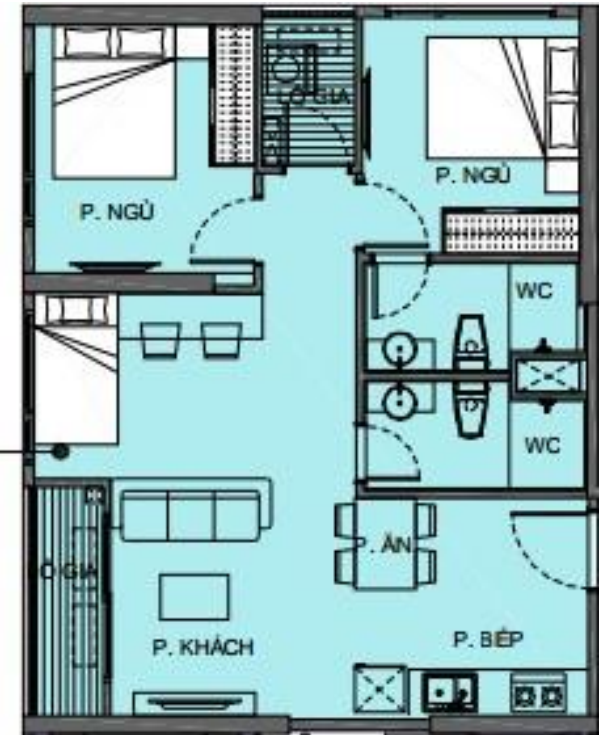
Typical Layout of T Tower

Number of apartments for foreigners each floor: 4 apartments with 2 bedrooms (1WC) + 1 apartment with 3 bedrooms (2WC) + 1 apartment with 2+1 bedrooms (2WC)



CH-04	
ZBR	LOẠI CH
81.7m ²	S 1m
74.8m ²	S 1hỗ

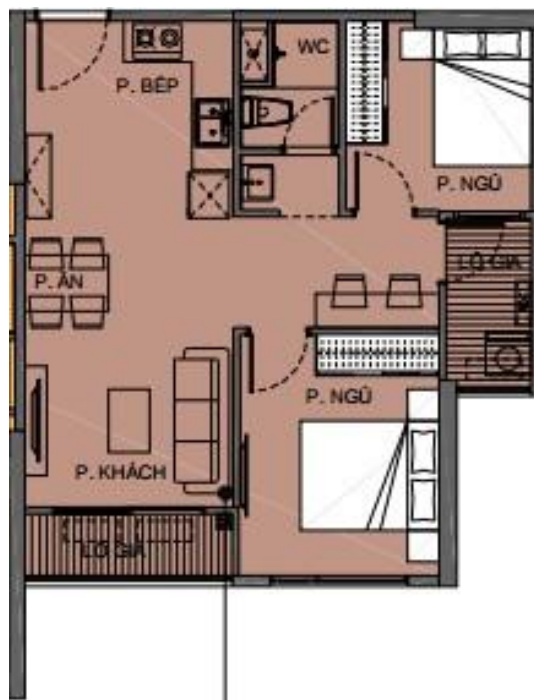
CH-10	
ZBR+	LOẠI CH
69.5m ²	S 1m
63.7m ²	S 1hỗ



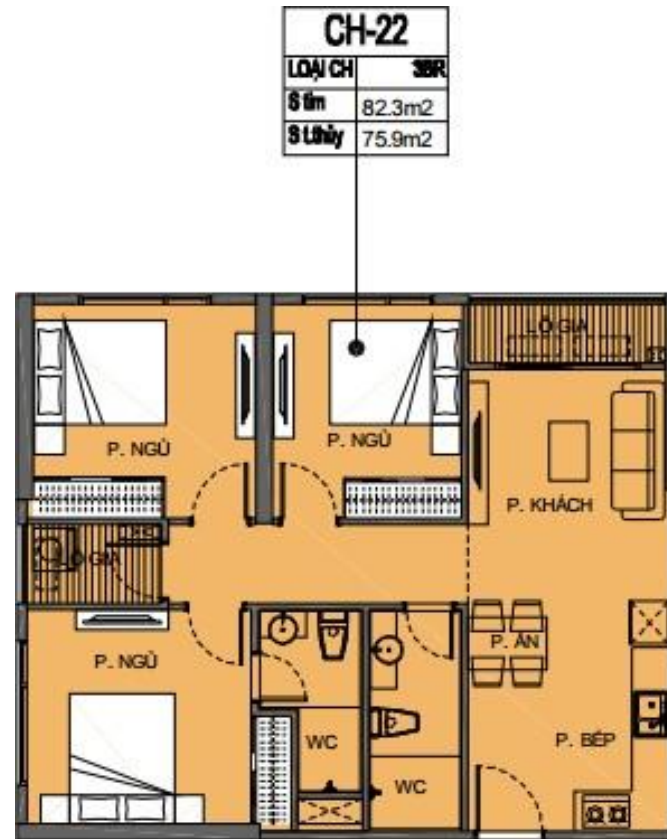
Just for reference, the official information shall be released after the open-for-sale ceremony

Typical Layout of U Tower

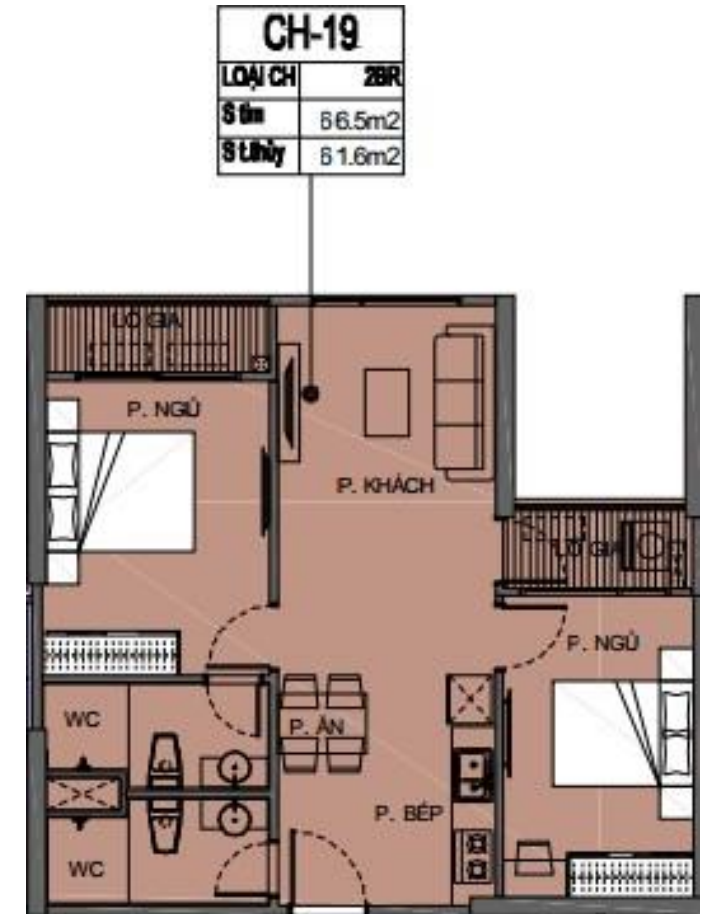
Number of apartments for foreigners on 1st floor: 4 apartments with 2 bedrooms (1WC) + 3 apartments with 3 bedrooms (2WC) + 2 apartments with 2 bedrooms (2WC)



CH-11	
LOẠI CH	2BR
Sàn	58.5m ²
S Lính	54.2m ²



CH-22	
LOẠI CH	3BR
Sàn	82.3m ²
S Lính	75.9m ²



CH-19	
LOẠI CH	2BR
Sàn	66.5m ²
S Lính	61.6m ²

Just for reference, the official information shall be released after the open-for-sale ceremony