



# HAVEN PARK

RESIDENCES

**VNK** Invest  
Consu





# Haven Park is the 5th park in Ecopark

(Swan Lake Park, Spring Park, Summer Park, Autumn Park, Haven Park)

## Haven Park area: 3ha

- 1.5 times as large as Autumn Park
- As large as Summer Park
- Three quarter as large as Spring Park



**HAVEN PARK** *with 02 blocks is in Haven Park*  
RESIDENCES





# GENERAL INFORMATION

<b>Project Name</b>	<b>HAVEN PARK RESIDENCES</b>
<b>Developer</b>	Ecopark Corporation Joint Stock Company
<b>Location</b>	Ecopark Urban Area, Hung Yen Province
<b>Architecture</b>	CallisonRTKL
<b>Structure</b>	41 floors (02 blocks) <b>in the park with an area of up to 3ha</b>
<b>Total units</b>	1248 units
<b>Units type</b>	+Studio, Apartment 1BR; 2BR; 2BR Deluxe; 3BR; 3BR Deluxe from 33.22m <sup>2</sup> to 123.48m <sup>2</sup> . +Pool Villa, Mezza, Duplex and Penthouse + 16 units/ floor
<b>Handover Condition</b>	Full- furnished
<b>Handover time</b>	Q1/2023 (Expected )
<b>Expected Price</b>	1800- 2000 USD/m <sup>2</sup> ( Included VAT)
<b>Ownership</b>	Freehold for Vietnamese 50 years SPA for foreigners





# LOCATION



HAVEN PARK RESIDENCES



Located at the West of The Island District - Ecopark Urban Area, Haven Park Residences is the center of Korean style walking street 2.5km, the entertainment hub of Ecopark.

SHÀ PHỐ  
HAVEN PARK

*Vườn*  
TRONG NHÀ  
*Nhà*  
TRONG CÔNG VIÊN



HAVEN PARK SHOPHOUSE



# LOCATION









THE WAY BACK TO HAVEN PARK  
THE WAY BACK TO NATURE





**3KM GO HOME- 3KM IN NATURE**







## TWO HUGE LAKES





**1,000M INFINITY GARDEN**

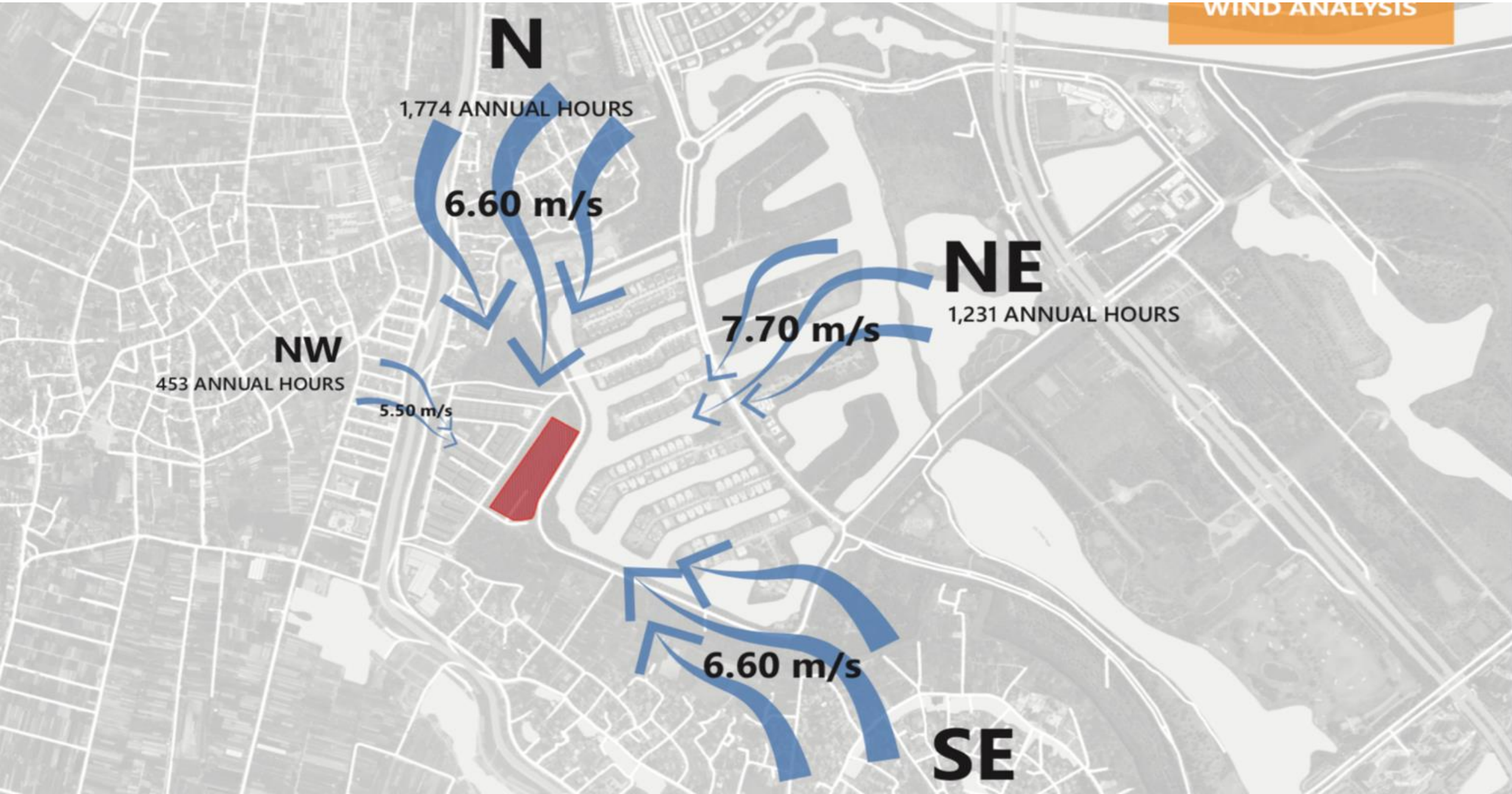


## **THE DESIGN OF HAVEN PARK - COMMUNE WITH NATURE**

Haven Park owns the design 'Life In Nature', the twin towers 'merge into one' with the nature, sun, wind of Ecopark, providing a living space – where people are friend with nature

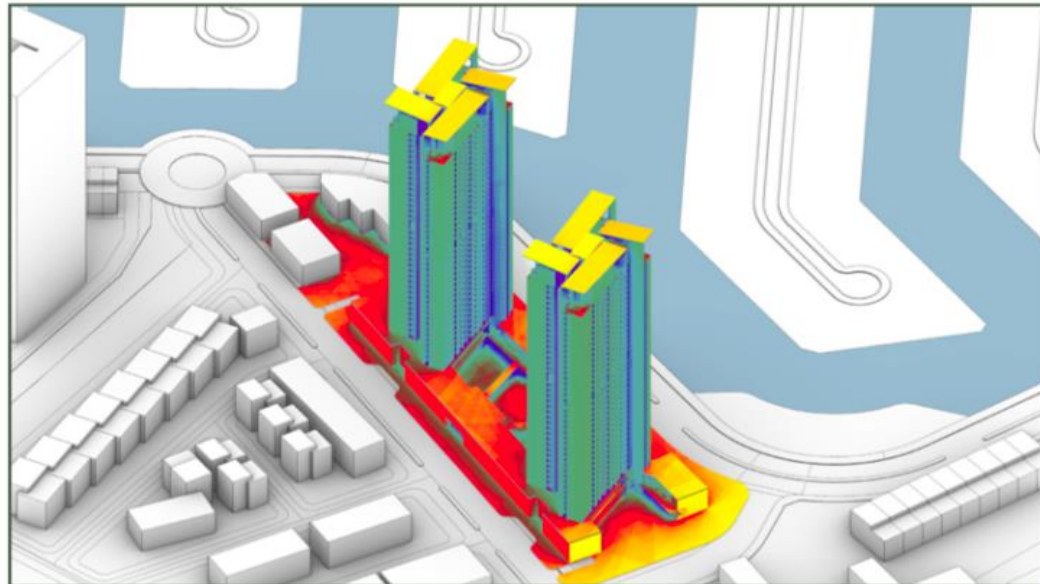
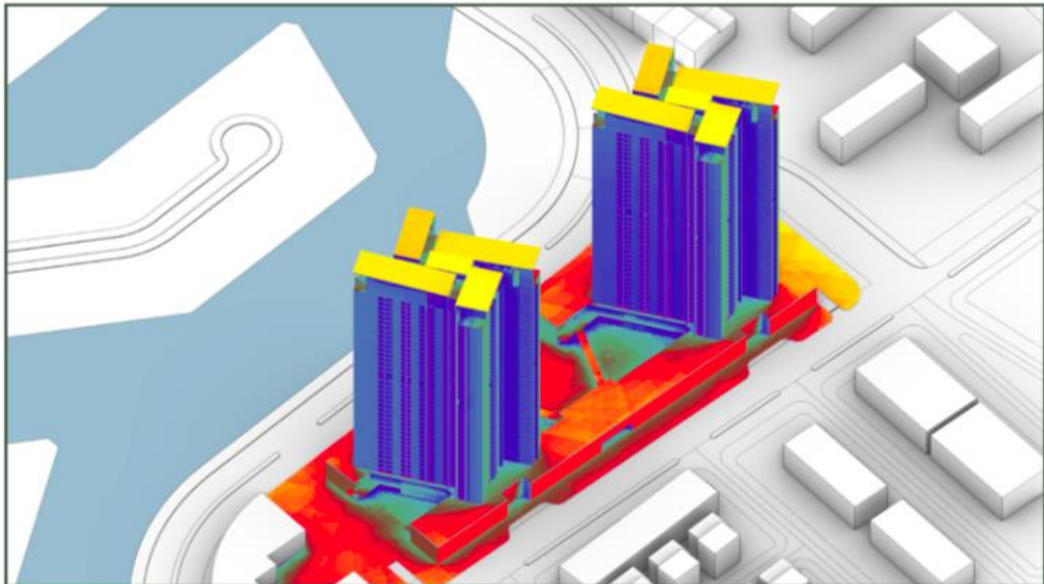
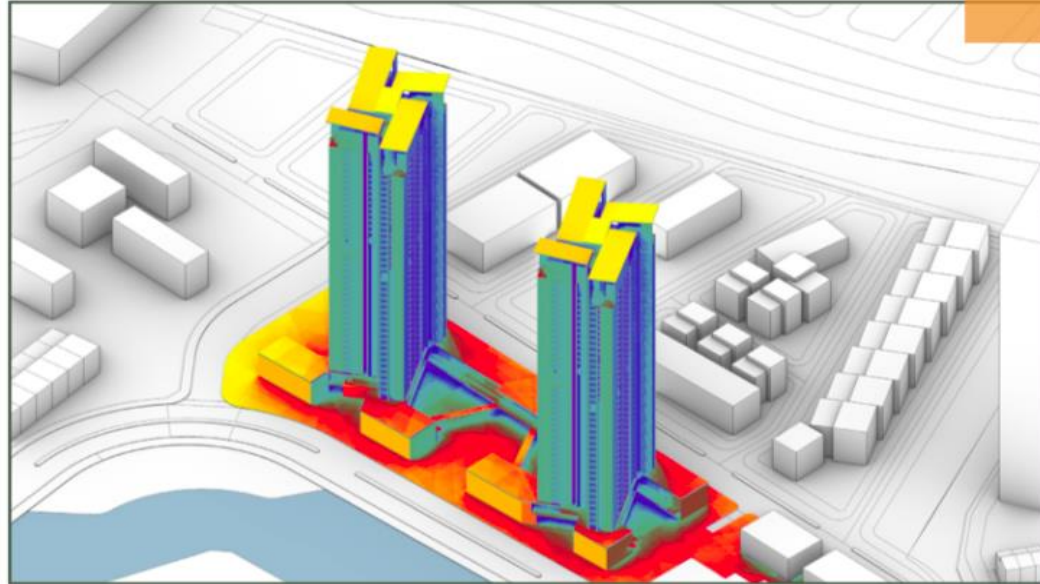
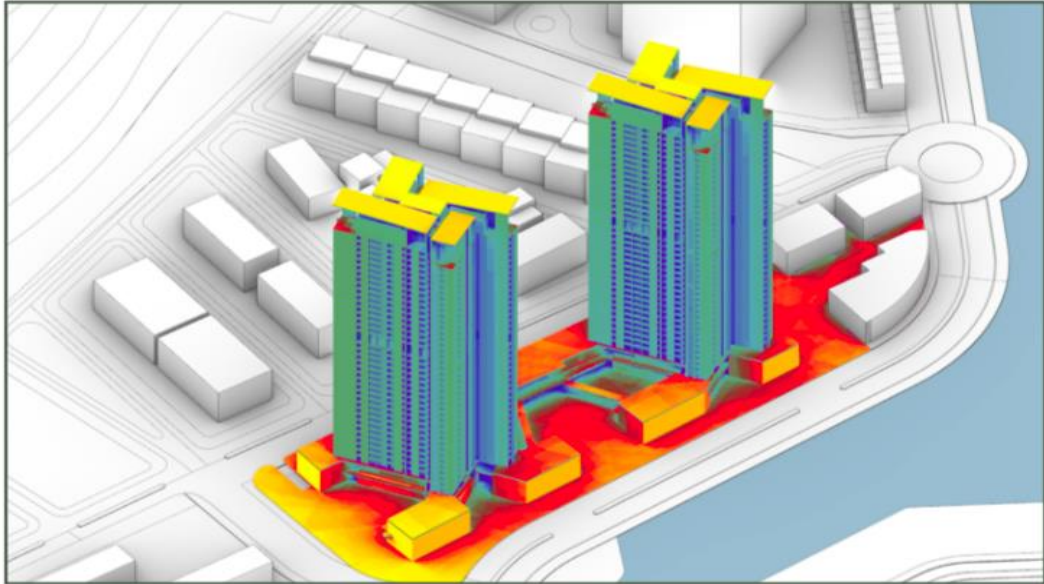








SOLAR  
ANALYSIS



kWh/m2

1395.22<

1255.70

1116.18

976.66

837.13

697.61

558.09

418.57

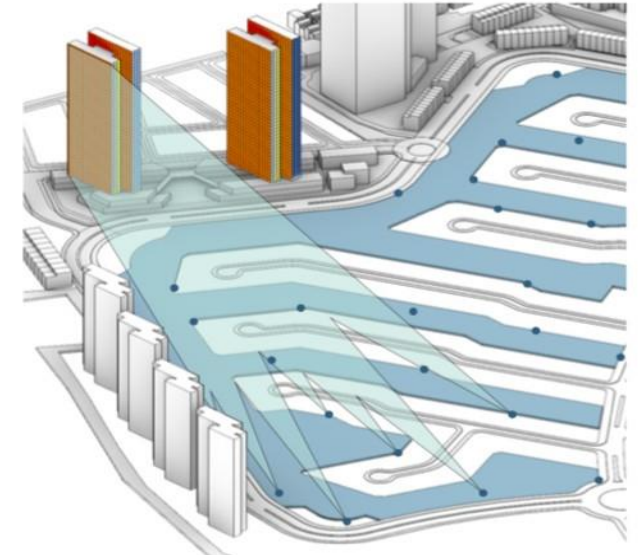
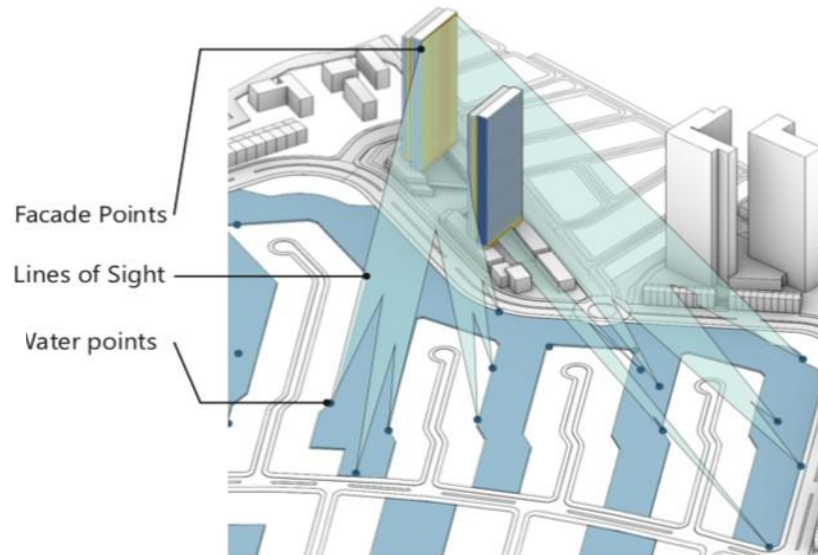
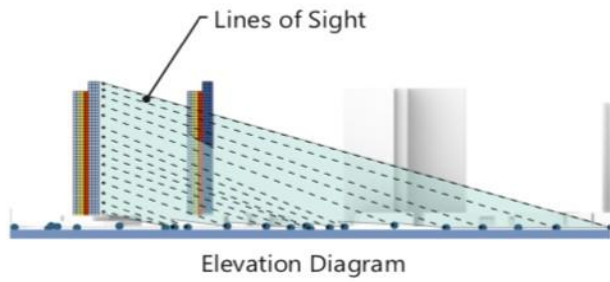
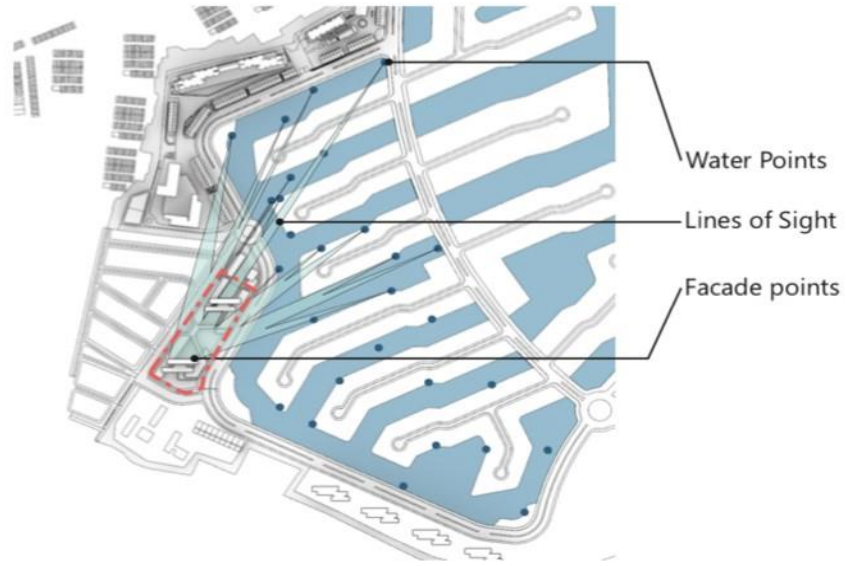
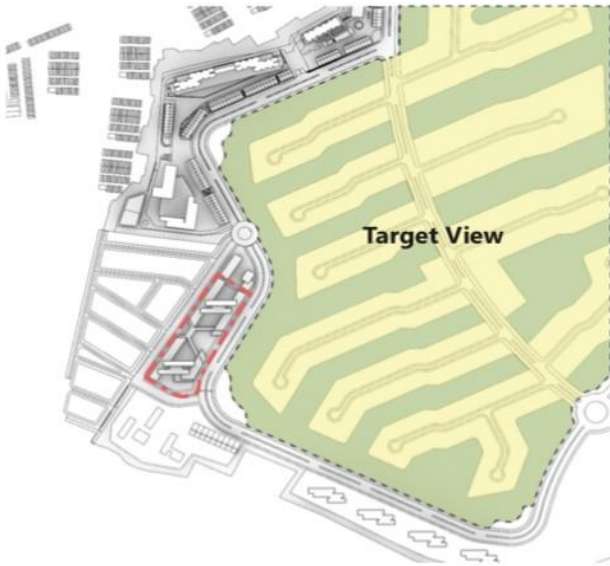
279.04

139.52

0.00



## VIEW LINES ANALYSIS





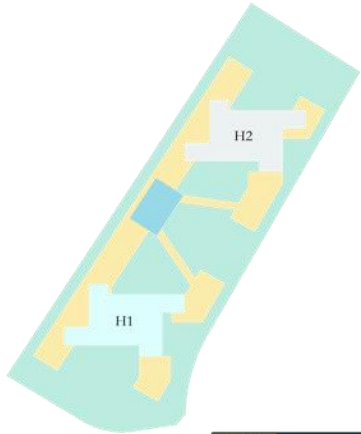
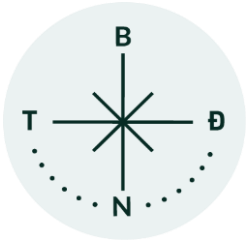
# GENERAL LAYOUT



  
**HAVEN PARK**  
RESIDENCES



# LAYOUT H1 BLOCK



<b>H1-10</b>
3PN 2VS
94.84 m <sup>2</sup>
86.32 m <sup>2</sup>

<b>H1-09</b>
Studio
34.09 m <sup>2</sup>
29.61 m <sup>2</sup>

<b>H1-08</b>
2PN 2VS
70.55 m <sup>2</sup>
63.76 m <sup>2</sup>

<b>H1-08A</b>
3PN 2VS
88.79 m <sup>2</sup>
79.52 m <sup>2</sup>

<b>H1-06</b>
2PN 2VS
63.48 m <sup>2</sup>
58.57 m <sup>2</sup>

<b>H1-05</b>
Studio
33.22 m <sup>2</sup>
29.64 m <sup>2</sup>

<b>H1-05A</b>
2PN 2VS
63.48 m <sup>2</sup>
58.57 m <sup>2</sup>

<b>H1-03</b>
2PN 2VS
63.48 m <sup>2</sup>
58.57 m <sup>2</sup>

<b>H1-02</b>
Studio
33.26 m <sup>2</sup>
29.50 m <sup>2</sup>

<b>H1-11</b>
1PN 1VS
36.03 m <sup>2</sup>
31.62 m <sup>2</sup>

<b>H1-12</b>
2PN 2VS
63.48 m <sup>2</sup>
58.76 m <sup>2</sup>

<b>H1-12A</b>
2PN 2VS
63.48 m <sup>2</sup>
58.75 m <sup>2</sup>

<b>H1-15A</b>
2PN 2VS
63.48 m <sup>2</sup>
58.57 m <sup>2</sup>

<b>H1-15</b>
3PN 2VS
112.67 m <sup>2</sup>
101.61 m <sup>2</sup>

<b>H1-16</b>
2PN 2VS
76.29 m <sup>2</sup>
68.31 m <sup>2</sup>

<b>H1-01</b>
3PN 2VS
123.48 m <sup>2</sup>
109.97 m <sup>2</sup>





# APARTMENT LAYOUT



## HAVEN PARK RESIDENCES



**STUDIO: CĂN 02, 05, 09**

DT Tim Tường: 33.22 - 34.09m<sup>2</sup>  
DT Thông Thủy: 29.50 - 29.64m<sup>2</sup>



### STUDIO



# APARTMENT LAYOUT

  
**HAVEN PARK**  
RESIDENCES



**1PN 1WC: CĂN 11**

DT Tim Tường: **36.03m<sup>2</sup>**  
DT Thông Thủy: **31.62m<sup>2</sup>**

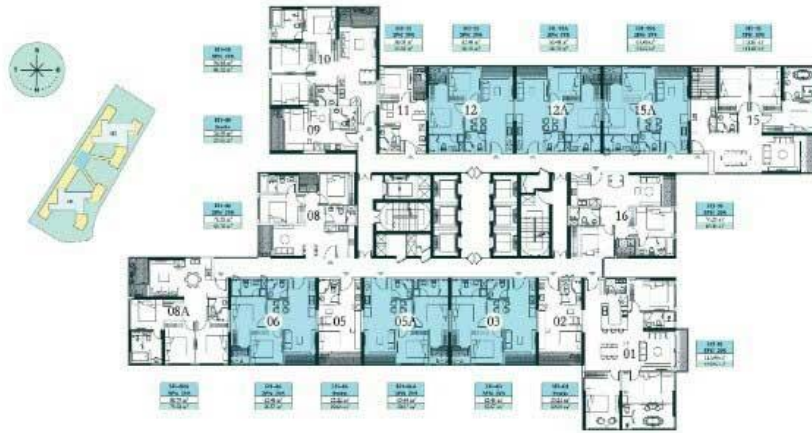
**1 BEDROOM**





# APARTMENT LAYOUT

  
**HAVEN PARK**  
RESIDENCES



**2PN 2WC: CĂN 03, 05A, 06, 12, 12A, 15A**

DT Tim Tường: **63.48m<sup>2</sup>**

DT Thông Thủy: **58.57 - 58.76m<sup>2</sup>**

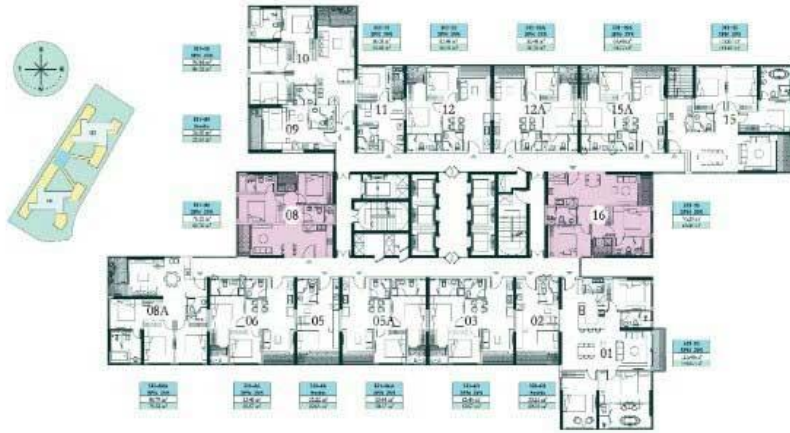


**2 BEDROOMS**



# APARTMENT LAYOUT

  
**HAVEN PARK**  
RESIDENCES



**2PN 2WC DELUXE: CĂN 08, 16**

DT Tim Tường: **70.55 - 76.29m<sup>2</sup>**

DT Thông Thủy: **63.76 - 68.31m<sup>2</sup>**



**2 BEDROOMS DELUXE**



# APARTMENT LAYOUT

  
**HAVEN PARK**  
RESIDENCES



**3PN 2WC LOẠI 1: CĂN 08A**

DT Tim Tường: **88.79m<sup>2</sup>**  
DT Thông Thủy: **79.52m<sup>2</sup>**



**03 BEDROOMS**



# APARTMENT LAYOUT

  
**HAVEN PARK**  
RESIDENCES



**3PN 2WC LOẠI 2: CĂN 10**

DT Tim Tường: **94.84m<sup>2</sup>**  
DT Thông Thủy: **86.32m<sup>2</sup>**



**03 BEDROOMS**



# APARTMENT LAYOUT

  
**HAVEN PARK**  
RESIDENCES



**3PN 2WC DELUXE LOẠI 1: CĂN 15**

DT Tim Tường: 112.67m<sup>2</sup>  
DT Thông Thủy: 101.61m<sup>2</sup>



**03 BEDROOMS DELUXE**



# APARTMENT LAYOUT

  
**HAVEN PARK**  
RESIDENCES



**3PN 2WC DELUXE LOẠI 2: CĂN 01**

DT Tim Tường: **123.48m<sup>2</sup>**  
DT Thông Thủy: **109.97m<sup>2</sup>**



**03 BEDROOMS DELUXE**









**WORKING SPACE IN THE PARK**



**RESTAURANT IN THE PARK**



**SMILE GARDEN**



**LEISURE GARDEN**



# UTILITIES



**ROYAL RESTAURANT**



**GLASS BRIDGE**



**WALKING PATH**



**GARDEN GAZEBO**



# SALE POLICY

Booking amount: 50,000,000 VND/unit

Expected launch time: Q2/2021

**Updating...**





# VNK Investment Consultancy



Kktalk ID: vnkichanoi



WechatID: vnkichanoi

- **Headquarter:** No.32 Tran Luu, An Phu Ward, Thu Duc City, Ho Chi Minh City, Vietnam
- **Hanoi Branch:** 1807B Charmvit Tower, 117 Tran Duy Hung, Ccau Giay District, Ha Noi Capital , Vietnam.
- **Korea Branch:** Two IFC (International Financial Center) 12F #1201, 10, Gukjegeumyung-ro, Yeongdeungpo-gu, Seoul, Republic of Korea

 [www.vnkic.com](http://www.vnkic.com)

 [info@vnkic.vn](mailto:info@vnkic.vn)

 (+84) 966 913 131 - (+84) 962 525 231

 **Facebook:** VNK Investment Consultancy / Proplink