



DIAMOND ISLAND  
LUXURY IN NATURE

# BRILLIANT TOWER

Developed by *Kusto*  
HOME



Few can claim to have laid eyes on an island within a city, but that's just what you'll see in Ho Chi Minh City's District 2. Set along the shores of the Saigon and Giong Ong To rivers, Diamond Island is truly a sight to behold.

Diamond Island offers a luxurious, healthy and safe environment that is ideal for families of all generations. In a world where the highest values are accorded to properties that can boast of having a waterfront location, privacy and space, Diamond Island creates an authentic resort-style ambience that ticks all the right boxes:

- **Waterfront Location:** Riverfront properties always have one of the highest values. Diamond Island is the only riverfront project in Ho Chi Minh City that offers unbeatable 360-degree views over the Saigon and Giong Ong To rivers as well as Bitexco. In addition, the fresh air makes it a desirable choice for multi-generational families.

- **Privacy:** When searching for a home, most people look for a community that offers security and tranquillity. Diamond Island is the only project in the city that provides such a community. By limiting access to the site, its residents enjoy a private, secure and peaceful environment.

- **Space:** Land is limited, especially in large cities like Ho Chi Minh City. Diamond Island occupies an area of eight hectares, with 87.5 per cent dedicated to green spaces. This means that almost every square metre belongs exclusively to the residents and is designed for the benefit of children, parents and grandparents. The list of amenities includes a 2,300sqm resort pool for kids, BBQ gardens, a Zen garden, and outdoor library and a promenade.

We understand that you would do everything for your family, and we feel that the place you call home should be no less. Easily reachable within 10 minutes from District 1 by car or water taxi, there's no reason why you shouldn't make Diamond Island your family's island.

**DIAMOND ISLAND – YOUR FAMILY'S ISLAND  
BUILT FOR FAMILIES OF ALL GENERATIONS.**



Located at an ideal position on Diamond Island, The Brilliant is the most exclusive tower of the six. Created for the most demanding and sophisticated customers, The Brilliant offers an exclusive quality of living that utilises feng shui to enhance prosperity and vitality. The tower's unique world-class design is the brainchild of the internationally renowned Japanese architect, Arata Isozaki, who based his concept on optimal wind circulation and light distribution to spread prosperous chi and vital energy to each apartment.

All units are fitted with top-class appliances from well-known brands such as Kohler, Bosch, General and Weiner, to name a few. Every aspect of the oversized apartments in Brilliant Tower are designed to evoke an aura of exclusivity and to provide a feeling of luxurious space to its residents.

THE BRILLIANT – CREATED FOR AN EXCLUSIVE QUALITY OF LIFE.

**● BASEMENT LEVEL**

- |   |   |
|---|---|
| 1 MAIN ARRIVAL / DIAMOND ISLAND FEATURE PLAZA                                   | 10 OUTDOOR FITNESS STATION                                |
| 2 SUPERMARKET   | 11 RESTAURANT / MARINA CLUB                               |
| 3 ART AND MUSIC ACADEMY   | 12 OUTDOOR CAFE AREA                                      |
| 4 INTERNATIONAL PRESCHOOL   | 13 OUTDOOR CAFE PAVILION                                  |
| 5 INDOOR KIDS CLUB  | 14 KIDS PLAYGROUND  |
| 6 SECURITY POST   | 15 RECREATION LAWN  |
| 7 TENNIS COURT  | 16 BBQ PAVILION   |
| 8 BADMINTON COURT   | 17 RIVERFRONT GARDEN GAZEBO                               |
| 9 MULTISPORT COURT 48' x 80'<br>- BASKETBALL<br>- VOLLEYBALL<br>- MINI FOOTBALL | 18 REFRESHMENT KIOSK                                      |
|   | 19 AMPHITHEATER<br>- EVENT / FUNCTIONS<br>- MUSIC / SHOWS |
|   | 20 SANCY SPA  |



**THE BRILLIANT IS COMPLETED AND READY TO MOVE IN**

- |  |                 |                            |
|--|-----------------|----------------------------|
| • 18-26 floors   | • Sancy SPA     | • Cafeteria & Diamond Café |
| • Duplexes, Pool Villas and Sky Villas   | • Infinity pool | • Clean & Clear services   |
| • Unit sizes from 82sqm to 640sqm  | • Nutrifort GYM | • Community room           |
| • 250 apartments with spacious balconies offering stunning river and city view | • GAME Center   | • Kid club                 |
|  | • Running path  | • Bicycle                  |
|  | • Water taxi    | • BBQ garden               |
|  | • Shuttle bus   | • International clinic     |

**● PODIUM LEVEL**

- |   |                                     |
|---|-------------------------------------|
| 21 RESORT POOL                          | 30 CHILDREN DEVELOPMENT AREA        |
| 22 LAP POOL / 4 LANES / 50M             | 31 CHILDREN CENTER                  |
| 23 KIDS POOL / PIRATE SHIP - WATER PARK | 32 COMMUNITY CENTER                 |
| 24 POOL BAR                             | 33 RESTAURANT / CAFE                |
| 25 JACUZZI                              | 34 RECREATION LAWN / EVENT LAWN     |
| 26 POOL DECK                            | 35 BBQ PAVILION                     |
| 27 CAFE SEATING AREA                    | 36 ELDER CLUB / GAME AREA           |
| 28 WONDERLAND CASTLE - PLAYGROUND       | 37 INFINITY POOL                    |
| 29 OUTDOOR CLASS / OUTDOOR READING AREA | 38 YOGA / MEDITATION AREA           |
|   | 39 ZEN PHILOSOPHY GARDEN WALK       |
|   | 40 LOUNGE ZONE AREA                 |
|   | 41 ZEN NATURAL GARDEN WITH PAVILION |
|   | 42 SUN LIBRARY                      |



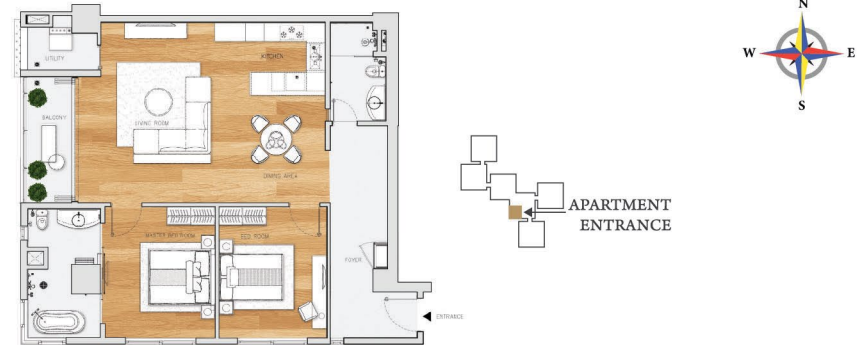
### ONE-BEDROOM APARTMENT E1

T3-07.05  
 Net floor area: 80,91 m<sup>2</sup>  
 Usable area: 75,84 m<sup>2</sup>



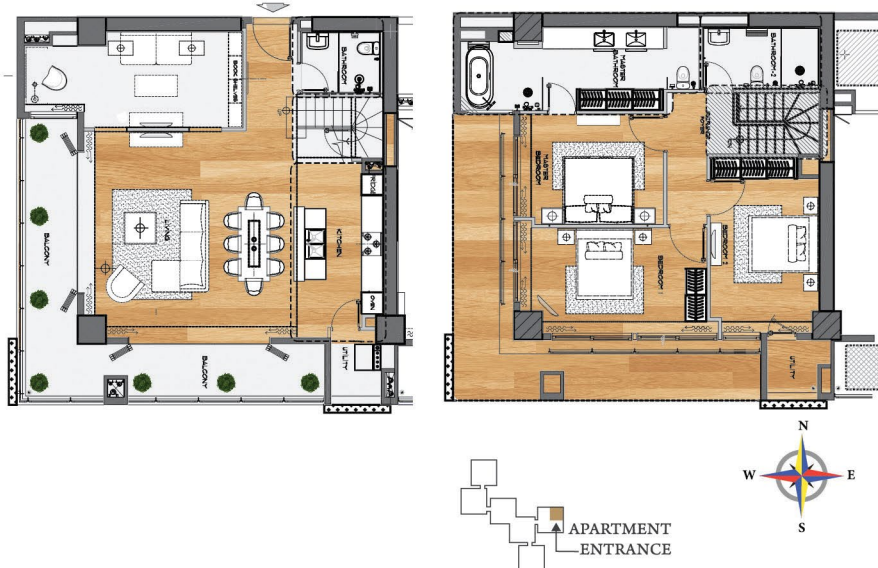
### TWO-BEDROOM APARTMENT A3

T3-03.06  
 Net floor area: 123,5 m<sup>2</sup>  
 Usable area: 118,32 m<sup>2</sup>



### THREE-BEDROOM APARTMENT B3

T3-14.02  
 Net floor area: 197,91 m<sup>2</sup>  
 Usable area: 192,92 m<sup>2</sup>



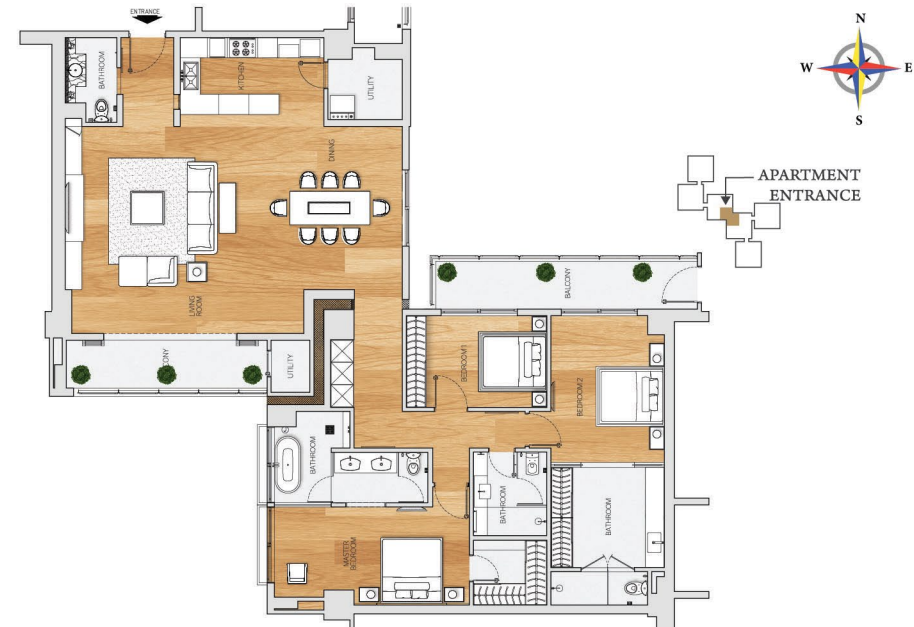
### THREE-BEDROOM APARTMENT B2

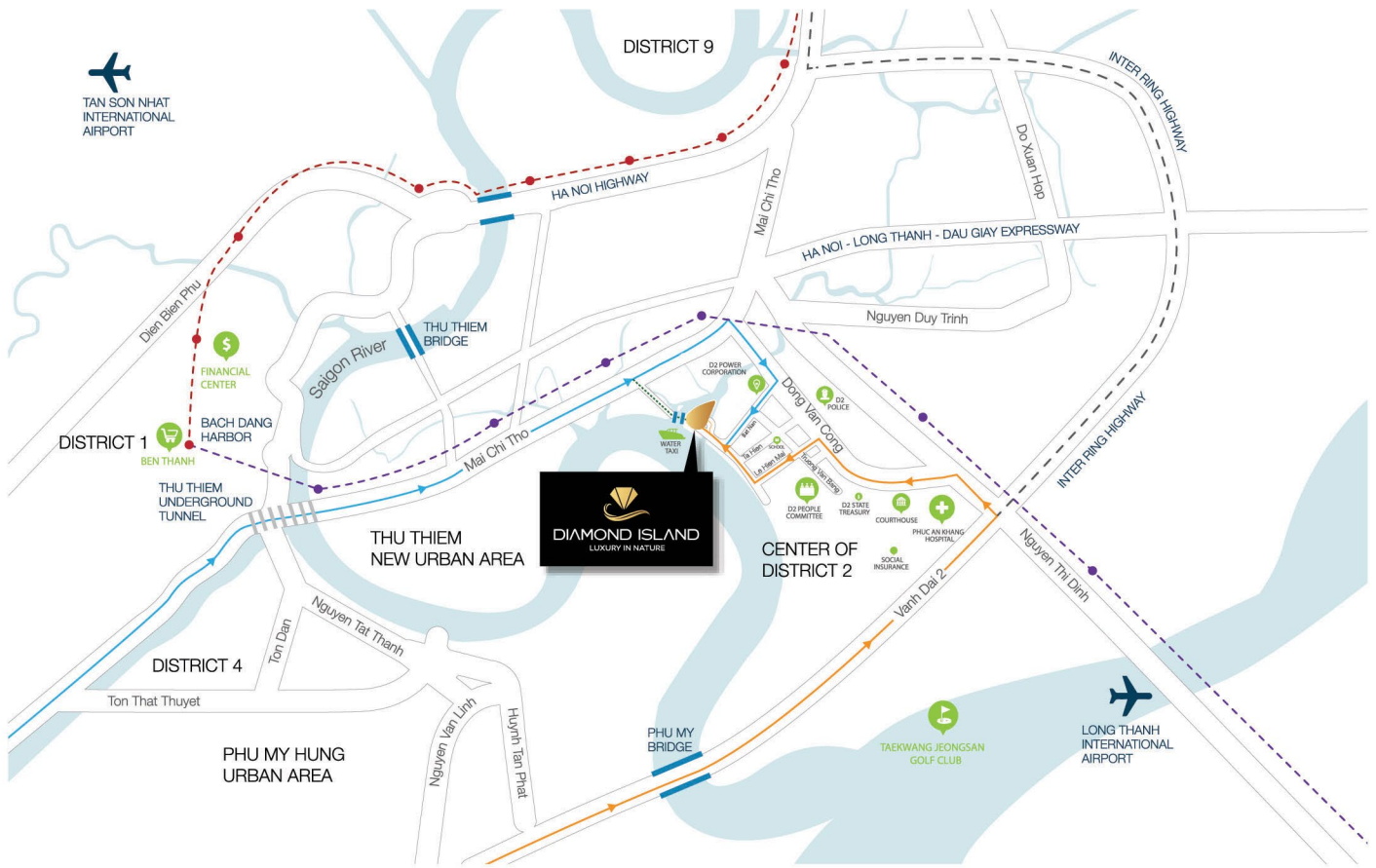
T3-08.02  
 Net floor area: 178,13 m<sup>2</sup>  
 Usable area: 169,41 m<sup>2</sup>



### THREE-BEDROOM APARTMENT B4

T4-06.07  
 Net floor area: 211,36 m<sup>2</sup>  
 Usable area: 205,45 m<sup>2</sup>





**03 minutes**  
Metro Station

**05 minutes**  
Thu Thiem Financial Centre  
District 2 Hospital  
Phuc An Khang Hospital

**07 minutes**  
Bach Dang Harbor

**10 minutes**  
People's Committee of District 1  
Rach Chiec National Sport Complex  
Taewang Jeongsan Country Club  
Australian International School (AIS)  
ACG International School

**15 minutes**  
Metro Cash & Carry An Phu  
Parkson Cantavil  
Lotte Cinema  
International School Ho Chi Minh City (ISHCMC)  
European International School (EIS)  
British International School (BIS)

**20 minutes**  
Phu My Hung New Urban Area  
Saigon Hi-Tech Park in District 9

**30 minutes**  
Tan Son Nhat International Airport



Developed by **Kusto**  
HOME

Partners:



**DIAMOND ISLAND**  
LUXURY IN NATURE

**0938 480 888**

[www.diamondisland.com.vn](http://www.diamondisland.com.vn)