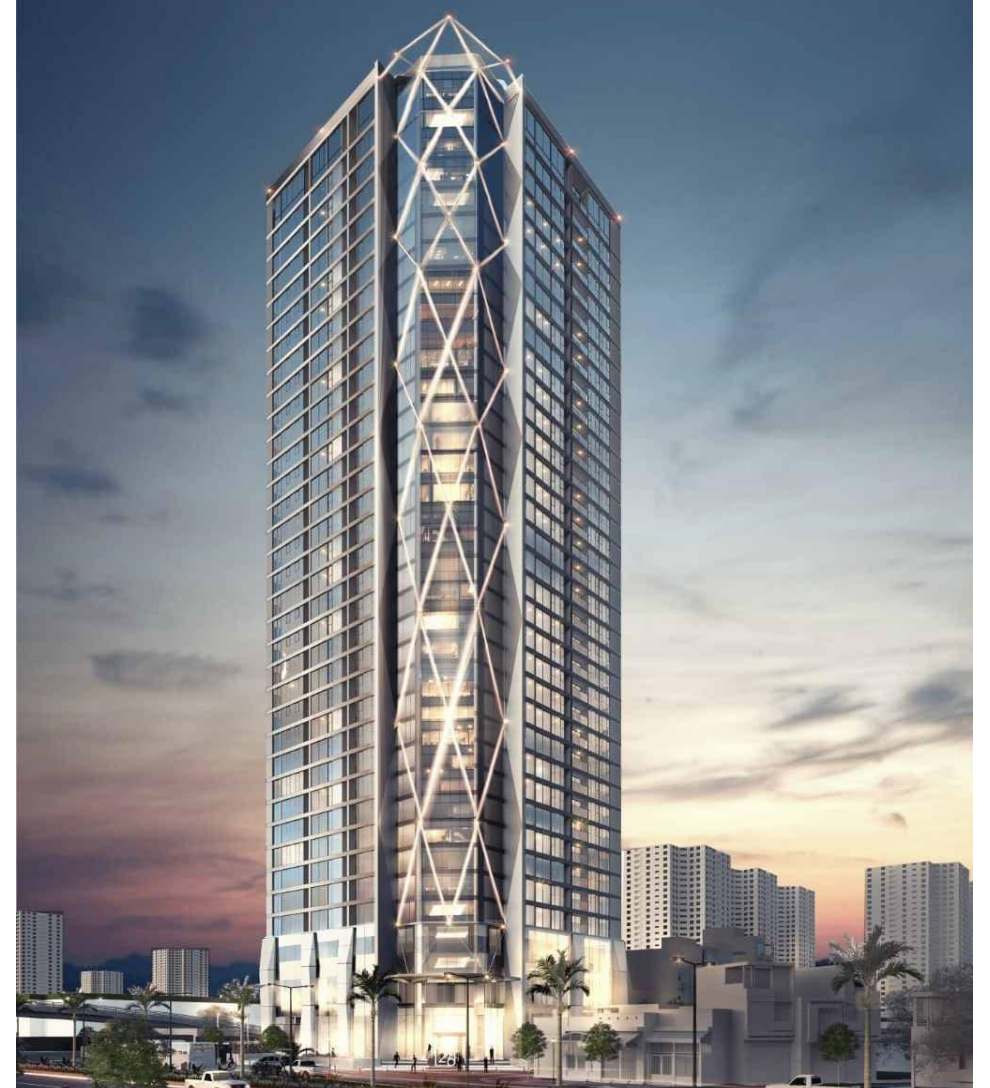


# SUMMIT BUILDING

[Condominium Summit Building](#) is located in the west of Hanoi, is located on the Tran Duy Hung Street, directly connected with the administration area - diplomatic Ba Dinh, who is also the main route from the city center away Boulevard Thang Long, belt 3 and the neighboring provinces, **Summit Building** owns one of the last land of the city of gold.

Project location not only offers Vietnam than 2 districts bordering Thanh Xuan and Nam Tu Liem in terms of transport links, segments, communities live, so that **Summit Building 216 Tran Duy Hung** also located in the new administrative center of the city, can compete directly with Ba Dinh District - the area was no longer vacant land.

To maximize the benefits from its strategic location, the project must generate 1 products in the premium segment, with a focus properly for the quality of works, as well as investment in human capital in all stages, from determining concept products, architectural design styles, materials selection finishing equipment, to application of smart technologies in the management and operation of buildings. Through it, gives customers a lifestyle "Smart Living" convenience, comfort, safety and maximum performance.



# SUMMIT BUILDING - SMART LIVING

## SMART DESIGN

Design optimization premises [Summit Building](#) to be able to use all the space in a smart way, using the area is available in combination with furniture AIO to maximize space utilization, in addition take advantage of all the dead angle to increase the storage space for the apartment



# SMART ON USER EXPERIENCE

- **Project Summit Building** with intelligent design people-centered, put the convenience of users on top, remove the die area, providing customers living space, comfort and maximum convenience





# SMART TECHNOLOGY

- Create style building new apartments new type of system application technology Smart Building and Smart Home, in order to improve the user experience, helping the operation, management and supervision of the apartment and the building became easier.



# SMART ON USER EXPERIENCE

**Project Summit Building** with intelligent design people-centered, put the convenience of users on top, remove the die area, providing customers living space, comfort and maximum convenience



# SMART lifestyle

- Intelligent design people-centered, put the convenience of users on top, remove the die area, providing customers with a comfortable living space and maximum convenience.





# ABOUT PROJECT

- Total area of the project: 2,373 m<sup>2</sup>
- Construction area: 1186.5 m<sup>2</sup>
- Building density: 50%
- Total floor area of building: 52217.5 m<sup>2</sup>
- Floating floor floor area: 41527.5 m<sup>2</sup>
- Basement area: 10.690 m<sup>2</sup>
- Some apartments area from 86.4 m<sup>2</sup> to 145.4 m<sup>2</sup>: 288 apartments
- Storeys: 35 floors
- Basement: 4 including 1 mezzanine floor
- Commercial podiums: Level 1-3
- Apartment blocks: Level 4-35
- No. Basement: 5 floors
- 4 functional basement garage: 2373 m<sup>2</sup>
- 3 functional basement garage: 2373 m<sup>2</sup>
- Functional basement 2 Garage: 2373 m<sup>2</sup>
- Mezzanine basement garage features: 1,198 m<sup>2</sup>
- Basement 1 trade and service functions: 2,373 m<sup>2</sup>



# PROJECT LOCATION

- Value in terms of the location of a project lies not only in transport links, but also on the availability of infrastructure and utilities around - a factor indispensable for the building.
- Unlike projects located within 2km, outside the belt 3 projects [Summit Building 216 Tran Duy Hung](#) benefit from the ability to connect on traffic, as well as a utility system external developments with schools, hospitals, commercial centers, parks and entertainment, etc. the shift administrative center of the West has been accompanied by the development of the office building class A, just behind the Hoan Kiem district.





# INTERNAL AREA FACILITIES

- Rather than waste space and cost of utilities rarely used or not deliver value for residents - but the surrounding area also provides full, **condominiums Summit Building** centralized investments in service , utility most practical, fully meet the needs and desires of essential customers, such as the complex health, pharmacies, laundries, community room, garden aquatic vegetables, etc. gives guests line a healthy life, performance and convenience. List of internal facility where the investor intends to put into the project in the form of lease or invest as follows:



# GENERAL SERVICES

- 24/7 Concierge Service
- Multifunction room Banquet Area Cinema Library residents  
Entrance for disabled Reception hall Lu yellowing (outdoor)  
Support Services home repair Fire fighters



# FITNESS

- Steam room
- Gym
- Himalayan salt steam room (sauna)
- Pool Aeration tank
- Yoga zone
- Beauty care area
- Electronic Golf





# SMART FEATURES

- Access control system intelligent
- Smart CCTV system
- Smart Heating System
- Air conditioning system intelligently
- Wifi system covers the entire building

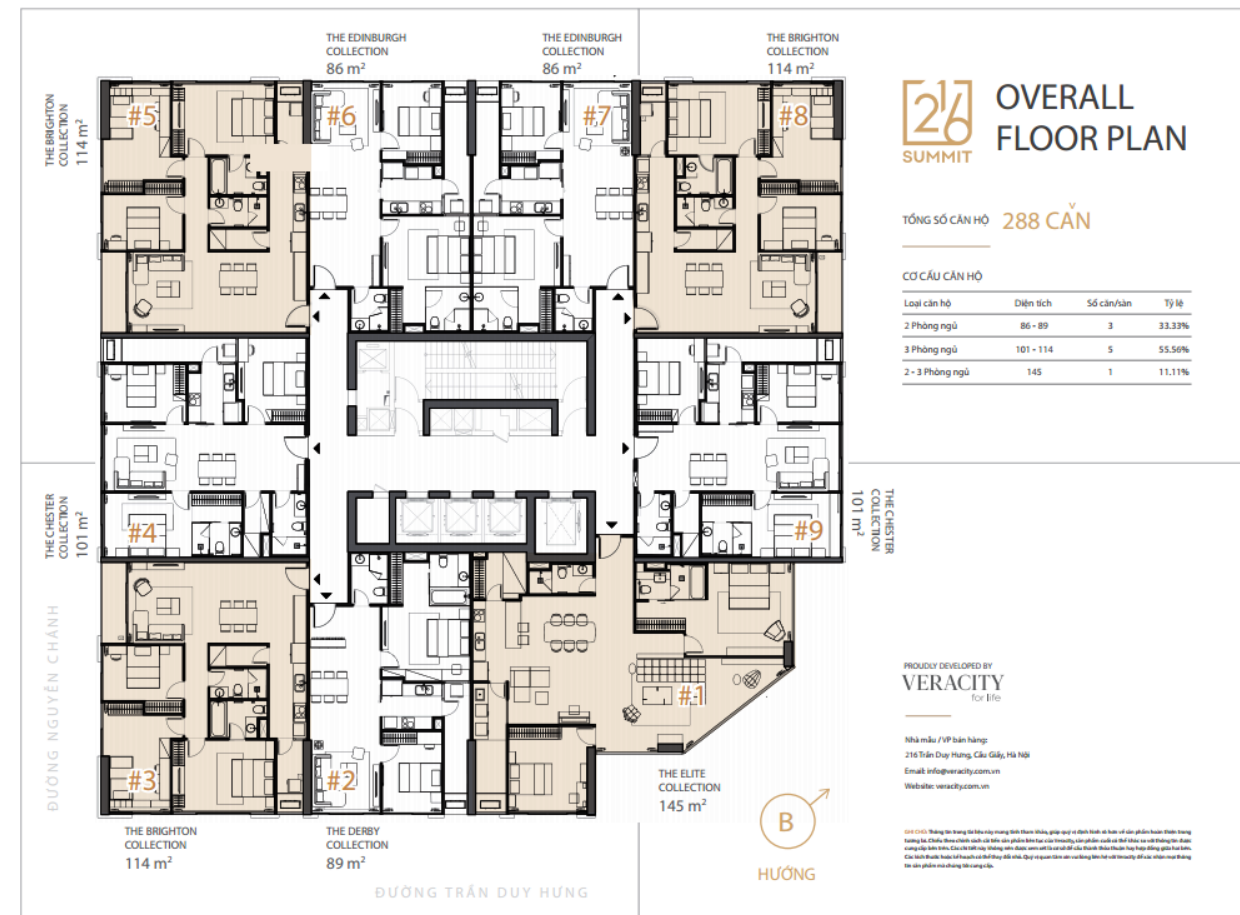
# F & P

- Waiting room
- Shop Cafe + Bakery
- Restaurant Bar
- Gourmet
- Shops



# OVERALL GROUND

- NOTE: The information in this document is for reference, help you shape better products in the future perfect. Under the policy of continuous product improvement of Veracity, the final product may differ from the information provided above. Details should not be considered as the basis of accuracy, and does not constitute an agreement or contract between the two parties. The size or plans may change little. You are interested please contact Veracity to confirm all information products that we offer.





# FLOOR A

- Area: 145.4 m<sup>2</sup>
- Northwest
- Hall: 5,2 m<sup>2</sup>
- Dining room: 10.5 m<sup>2</sup>
- Kitchen: 9.9 m<sup>2</sup>
- Storage: 5.0 m<sup>2</sup>
- Lot Sale: 9.6 m<sup>2</sup>
- versatile space: 12.2 m<sup>2</sup>
- Living room: 32 m<sup>2</sup>
- Bedroom 1: 17.9 m<sup>2</sup>
- WC 1 + dressing room: 9.7 m<sup>2</sup>
- Bedroom 2: 16.4 m<sup>2</sup>
- WC 2: 4, 0 m<sup>2</sup>

## CĂN HỘ A



### CĂN A: 145,4 m<sup>2</sup> (HƯỚNG TÂY BẮC)

-SÂN: 5,2m<sup>2</sup>  
-P. ĂN: 10,5m<sup>2</sup>  
-BẾP: 9,9m<sup>2</sup>  
-KHO: 5,0m<sup>2</sup>  
-LÒ GIA: 9,6m<sup>2</sup>  
-KH. ĐA NĂNG: 12,2m<sup>2</sup>  
-P. KHÁCH: 32m<sup>2</sup>  
-P. NGỦ 1: 17,9m<sup>2</sup>  
-WC 1 + THAY ĐỒ: 9,7m<sup>2</sup>  
-P. NGỦ 2: 16,4 m<sup>2</sup>  
-WC 2: 4,0m<sup>2</sup>

# FLOOR B

Area: 114.6 m<sup>2</sup>

- Category 1: Direction Northeast
- Type 2: Southwest
- Category 3: Direction Northeast
- Hall: 2.8 m<sup>2</sup>
- Kitchen: 9.4 m<sup>2</sup>
- Lot in 1: 3, 9 m<sup>2</sup>
- Lot Sale 2: 4.1 m<sup>2</sup>
- Living room + dining: 30.4 m<sup>2</sup>
- Bedroom 1: 17.3 m<sup>2</sup>
- WC 1: 4.1 m<sup>2</sup>
- Bedroom 2: 14.7 m<sup>2</sup>
- Bedroom 3: 10.3 m<sup>2</sup>
- 2 WC: 4,1 m<sup>2</sup>
- Warehouse: 2,6 m<sup>2</sup>

## CĂN HỘ B



**CĂN B: 114,6m<sup>2</sup>**  
LOẠI 1: HƯỚNG ĐÔNG BẮC  
LOẠI 2: HƯỚNG TÂY NAM  
LOẠI 3: HƯỚNG ĐÔNG BẮC

-SẢNH: 2,6m<sup>2</sup>  
-BẾP: 9,4m<sup>2</sup>  
-LÒ GIA 1: 3,9m<sup>2</sup>  
-LÒ GIA 2: 4,1m<sup>2</sup>  
-KHÁCH + ĂN: 30,4m<sup>2</sup>  
-P. NGỦ 1: 17,3m<sup>2</sup>  
-WC 1: 4,5m<sup>2</sup>  
-P. NGỦ 2: 14,7m<sup>2</sup>  
-P. NGỦ 3: 10,3m<sup>2</sup>  
-WC 2: 4,1m<sup>2</sup>  
-KHÖ: 2,6m<sup>2</sup>

# FLOOR C

Area: 101.2 m<sup>2</sup>

- Category 1: Direction Northeast
- Type 2: Southwest
- Hall: 5.0 m<sup>2</sup>
- Kitchen: 6.5 m<sup>2</sup>
- Lot Sale: 7.5 m<sup>2</sup>
- Living room + dining: 25.6 m<sup>2</sup>
- Bedroom 1: 12.8 m<sup>2</sup>
- WC 1 + Dress: 7.0 m<sup>2</sup>
- Bedroom 2: 12.9 m<sup>2</sup>
- Bedroom 3: 10.9 m<sup>2</sup>
- 2 WC: 4,9 m<sup>2</sup>
- Storage: 3.3 m<sup>2</sup>

CĂN HỘ C



**CĂN C: 101,2m<sup>2</sup>**  
**LOẠI 1: HƯỚNG ĐÔNG BẮC**  
**LOẠI 2: HƯỚNG TÂY NAM**

-SÂN: 5,0m<sup>2</sup>  
-BẾP: 6,5m<sup>2</sup>  
-LÒ GIA: 7,5m<sup>2</sup>  
-P. KHÁCH + ĂN: 25,6m<sup>2</sup>  
-P. NGỦ 1: 12,8m<sup>2</sup>  
-WC1 + THAY ĐÓ: 7,0m<sup>2</sup>  
-P. NGỦ 2: 12,9m<sup>2</sup>  
-P. NGỦ 3: 10,9m<sup>2</sup>  
-WC2: 4,9m<sup>2</sup>  
-KHO: 3,3m<sup>2</sup>



# FLOOR D

- Area: 89.8 m<sup>2</sup>
- Northwest
- Hall: 5.1 m<sup>2</sup>
- Kitchen: 6.6 m<sup>2</sup>
- Lot Sale: 7.4 m<sup>2</sup>
- Living room + dining: 27.8 m<sup>2</sup>
- Bedroom 1: 15, 0 m<sup>2</sup>
- WC 1 + Dress: 8.7 m<sup>2</sup>
- Bedroom 2: 10.8 m<sup>2</sup>
- WC 2: 4.3 m<sup>2</sup>



# FLOOR E

Area: 86.4 m<sup>2</sup>

- Direction Southeast
- Hall: 5.1 m<sup>2</sup>
- Kitchen: 6.4 m<sup>2</sup>
- Lot Sale: 7.8 m<sup>2</sup>
- Living room + dining: 27.5 m<sup>2</sup>
- Bedroom 1: 13, 1 m<sup>2</sup>
- WC 1 + Dress: 7.7 m<sup>2</sup>
- Bedroom 2: 11.6 m<sup>2</sup>
- 2 WC: 3,6 m<sup>2</sup>

CĂN HỘ E



**CĂN E: 86,4 m<sup>2</sup>**  
**(CÁ 2 LOẠI HƯỚNG ĐÔNG NAM)**

-SÂN: 5,1m<sup>2</sup>  
-BẾP: 6,4m<sup>2</sup>  
-LÒ GIA: 7,8m<sup>2</sup>  
-PKHÁCH + ĂN: 27,5m<sup>2</sup>  
-P. NGỦ 1: 13,1m<sup>2</sup>  
-WC1 + THAY ĐỒ: 7,7m<sup>2</sup>  
-P. NGỦ 2: 11,6m<sup>2</sup>  
-WC2: 3,6m<sup>2</sup>

# Summit High Apartment Building 216 Tran Duy Hung 35 floors, topped prepare handover.

- - Project and Open Sales topped Phase 1
  - First Class 5 \* in Hanoi
  - Offering 3-year managed services fees.
  - Discounts of up to 6% of the total value of the apartment.
  - Price from: 45 to 60 million / m<sup>2</sup> (full luxury interior).
  - Integration of advanced utilities designed with modern, high-rise apartment Building Summit will give residents a life class with accents "Smart Living"



# Progress interior condominium form

## Summit Building Tran Duy Hung





# Progress interior condominium form

## Summit Building Tran Duy Hung



# Progress interior condominium form

## Summit Building Tran Duy Hung

