

REV	DATE	REMARKS
1	01 / 04 / 2011	FIRST CONSTRUCTION ISSUE
2	12 / 04 / 2011	REVISED AS SITE MEASUREMENT
3	15 / 04 / 2011	REVISED DOOR TAG

CONSTRUCTION DESIGN STAGE

THIẾT KẾ THI CÔNG

QUẢN LÝ DỰ ÁN - PROJECT MANAGEMENT

GIAM ĐỐC DỰ ÁN
PROJECT DIRECTOR

CHỦ ĐẦU TƯ - PROJECT OWNER

DEVELOPMENT
BINH THIEN AN PROPERTY JSC

UNIT 104A, 105A, 106A, 107A/108A, 109A/110A, 111A/112A, 113A/114A, 115A/116A, 117A/118A, 119A/120A, 121A/122A, 123A/124A, 125A/126A, 127A/128A, 129A/130A, 131A/132A, 133A/134A, 135A/136A, 137A/138A, 139A/140A, 141A/142A, 143A/144A, 145A/146A, 147A/148A, 149A/150A, 151A/152A, 153A/154A, 155A/156A, 157A/158A, 159A/160A, 161A/162A, 163A/164A, 165A/166A, 167A/168A, 169A/170A, 171A/172A, 173A/174A, 175A/176A, 177A/178A, 179A/180A, 181A/182A, 183A/184A, 185A/186A, 187A/188A, 189A/190A, 191A/192A, 193A/194A, 195A/196A, 197A/198A, 199A/200A, 201A/202A, 203A/204A, 205A/206A, 207A/208A, 209A/210A, 211A/212A, 213A/214A, 215A/216A, 217A/218A, 219A/220A, 221A/222A, 223A/224A, 225A/226A, 227A/228A, 229A/230A, 231A/232A, 233A/234A, 235A/236A, 237A/238A, 239A/240A, 241A/242A, 243A/244A, 245A/246A, 247A/248A, 249A/250A, 251A/252A, 253A/254A, 255A/256A, 257A/258A, 259A/260A, 261A/262A, 263A/264A, 265A/266A, 267A/268A, 269A/270A, 271A/272A, 273A/274A, 275A/276A, 277A/278A, 279A/280A, 281A/282A, 283A/284A, 285A/286A, 287A/288A, 289A/290A, 291A/292A, 293A/294A, 295A/296A, 297A/298A, 299A/300A, 301A/302A, 303A/304A, 305A/306A, 307A/308A, 309A/310A, 311A/312A, 313A/314A, 315A/316A, 317A/318A, 319A/320A, 321A/322A, 323A/324A, 325A/326A, 327A/328A, 329A/330A, 331A/332A, 333A/334A, 335A/336A, 337A/338A, 339A/340A, 341A/342A, 343A/344A, 345A/346A, 347A/348A, 349A/350A, 351A/352A, 353A/354A, 355A/356A, 357A/358A, 359A/360A, 361A/362A, 363A/364A, 365A/366A, 367A/368A, 369A/370A, 371A/372A, 373A/374A, 375A/376A, 377A/378A, 379A/380A, 381A/382A, 383A/384A, 385A/386A, 387A/388A, 389A/390A, 391A/392A, 393A/394A, 395A/396A, 397A/398A, 399A/400A, 401A/402A, 403A/404A, 405A/406A, 407A/408A, 409A/410A, 411A/412A, 413A/414A, 415A/416A, 417A/418A, 419A/420A, 421A/422A, 423A/424A, 425A/426A, 427A/428A, 429A/430A, 431A/432A, 433A/434A, 435A/436A, 437A/438A, 439A/440A, 441A/442A, 443A/444A, 445A/446A, 447A/448A, 449A/450A, 451A/452A, 453A/454A, 455A/456A, 457A/458A, 459A/460A, 461A/462A, 463A/464A, 465A/466A, 467A/468A, 469A/470A, 471A/472A, 473A/474A, 475A/476A, 477A/478A, 479A/480A, 481A/482A, 483A/484A, 485A/486A, 487A/488A, 489A/490A, 491A/492A, 493A/494A, 495A/496A, 497A/498A, 499A/500A, 501A/502A, 503A/504A, 505A/506A, 507A/508A, 509A/510A, 511A/512A, 513A/514A, 515A/516A, 517A/518A, 519A/520A, 521A/522A, 523A/524A, 525A/526A, 527A/528A, 529A/530A, 531A/532A, 533A/534A, 535A/536A, 537A/538A, 539A/540A, 541A/542A, 543A/544A, 545A/546A, 547A/548A, 549A/550A, 551A/552A, 553A/554A, 555A/556A, 557A/558A, 559A/560A, 561A/562A, 563A/564A, 565A/566A, 567A/568A, 569A/570A, 571A/572A, 573A/574A, 575A/576A, 577A/578A, 579A/580A, 581A/582A, 583A/584A, 585A/586A, 587A/588A, 589A/590A, 591A/592A, 593A/594A, 595A/596A, 597A/598A, 599A/600A, 601A/602A, 603A/604A, 605A/606A, 607A/608A, 609A/610A, 611A/612A, 613A/614A, 615A/616A, 617A/618A, 619A/620A, 621A/622A, 623A/624A, 625A/626A, 627A/628A, 629A/630A, 631A/632A, 633A/634A, 635A/636A, 637A/638A, 639A/640A, 641A/642A, 643A/644A, 645A/646A, 647A/648A, 649A/650A, 651A/652A, 653A/654A, 655A/656A, 657A/658A, 659A/660A, 661A/662A, 663A/664A, 665A/666A, 667A/668A, 669A/670A, 671A/672A, 673A/674A, 675A/676A, 677A/678A, 679A/680A, 681A/682A, 683A/684A, 685A/686A, 687A/688A, 689A/690A, 691A/692A, 693A/694A, 695A/696A, 697A/698A, 699A/700A, 701A/702A, 703A/704A, 705A/706A, 707A/708A, 709A/710A, 711A/712A, 713A/714A, 715A/716A, 717A/718A, 719A/720A, 721A/722A, 723A/724A, 725A/726A, 727A/728A, 729A/730A, 731A/732A, 733A/734A, 735A/736A, 737A/738A, 739A/740A, 741A/742A, 743A/744A, 745A/746A, 747A/748A, 749A/750A, 751A/752A, 753A/754A, 755A/756A, 757A/758A, 759A/760A, 761A/762A, 763A/764A, 765A/766A, 767A/768A, 769A/770A, 771A/772A, 773A/774A, 775A/776A, 777A/778A, 779A/780A, 781A/782A, 783A/784A, 785A/786A, 787A/788A, 789A/790A, 791A/792A, 793A/794A, 795A/796A, 797A/798A, 799A/800A, 801A/802A, 803A/804A, 805A/806A, 807A/808A, 809A/810A, 811A/812A, 813A/814A, 815A/816A, 817A/818A, 819A/820A, 821A/822A, 823A/824A, 825A/826A, 827A/828A, 829A/830A, 831A/832A, 833A/834A, 835A/836A, 837A/838A, 839A/840A, 841A/842A, 843A/844A, 845A/846A, 847A/848A, 849A/850A, 851A/852A, 853A/854A, 855A/856A, 857A/858A, 859A/860A, 861A/862A, 863A/864A, 865A/866A, 867A/868A, 869A/870A, 871A/872A, 873A/874A, 875A/876A, 877A/878A, 879A/880A, 881A/882A, 883A/884A, 885A/886A, 887A/888A, 889A/890A, 891A/892A, 893A/894A, 895A/896A, 897A/898A, 899A/900A, 901A/902A, 903A/904A, 905A/906A, 907A/908A, 909A/910A, 911A/912A, 913A/914A, 915A/916A, 917A/918A, 919A/920A, 921A/922A, 923A/924A, 925A/926A, 927A/928A, 929A/930A, 931A/932A, 933A/934A, 935A/936A, 937A/938A, 939A/940A, 941A/942A, 943A/944A, 945A/946A, 947A/948A, 949A/950A, 951A/952A, 953A/954A, 955A/956A, 957A/958A, 959A/960A, 961A/962A, 963A/964A, 965A/966A, 967A/968A, 969A/970A, 971A/972A, 973A/974A, 975A/976A, 977A/978A, 979A/980A, 981A/982A, 983A/984A, 985A/986A, 987A/988A, 989A/990A, 991A/992A, 993A/994A, 995A/996A, 997A/998A, 999A/1000A

CHỦ TRỢ THIẾT KẾ
PRINCIPAL ARCHITECT

ARATA ISOZAKI & ASSOCIATES

9-6-14 ARABAKA
MINATOPAI TOKYO
TEL: +81(0)3(6561)2001 Fax: 81(0)3(674)2695

ARATA ISOZAKI

THIẾT KẾ NỘI THỰC - INTERIOR ARCHITECT

MAUNSELL VIT NAM

10th Floor, Central Park Building, 117 - 119 - 121 Nguyen Du Street
Business Telephone: (84-8) 3910 6535 - Facsimile: (84-8) 3910 6540

TRAN MINH TUAN

THIẾT KẾ ĐIỆN NƯỚC - M&E CONSULTANT

Inclodine
Engineering

Số 30A, 203 Đường Kinh Sĩ, District 1, Hồ Chí Minh City, Vietnam
Tel: (84-8) 38221071, Fax: (84-8) 38231548
Tel: (84-8) 6290 8400, Fax: (84-8) 6290 8406
Email: info@inclodine.com, Web: www.inclodine.com

CAROL GAY

KỸ SƯ THI CÔNG ĐỊA PHƯƠNG - LOCAL ARCHITECT

HTT GROUP
HTT ARCHITECTURE
& INVESTMENT CO., Ltd

60 Nguyễn Văn Thủ Street, 1, Ho Chi Minh
Tel: (84-8) 9111220 - 9101925 Fax: (84-8) 9111273
Email: hntarchitect@httagroup.com

HỒ THIỆU TRI

INTERIOR DESIGN CONSULTANT

Aedas Interiors Pte Ltd

10 Hoe Chiang Road,
#11-01 Keppel Towers, Singapore 089315
T: +65 6724 4733 F: +65 6724 6233
E: singapore@aedas.com aedas.com

SIMON THOMPSON

CONG TRÌNH - PROJECT

DIAMOND ISLAND
ĐẢO KIM CƯƠNG

VỊ TRÍ - LOCATION
PƯỜNG BÌNH KHÁNH-THƯỜNG TÂY QUẬN 2-PHỐ CHỢ MỚI
BÌNH KHÁNH-BÌNH TRƯỜNG TÂY PRECINCT, DISTRICT 2, HO CHI MINH CITY

HỒ THIỆU TRI

HÀNG MỤC - ZONE NAME

ZONE B - KHU B

TÊN BẢN VẼ - DRAWING TITLE

TYPE 1 UNIT A1
FIXTURE FURNITURE PLAN /
ARCHITECTURAL INFORMATION PLAN

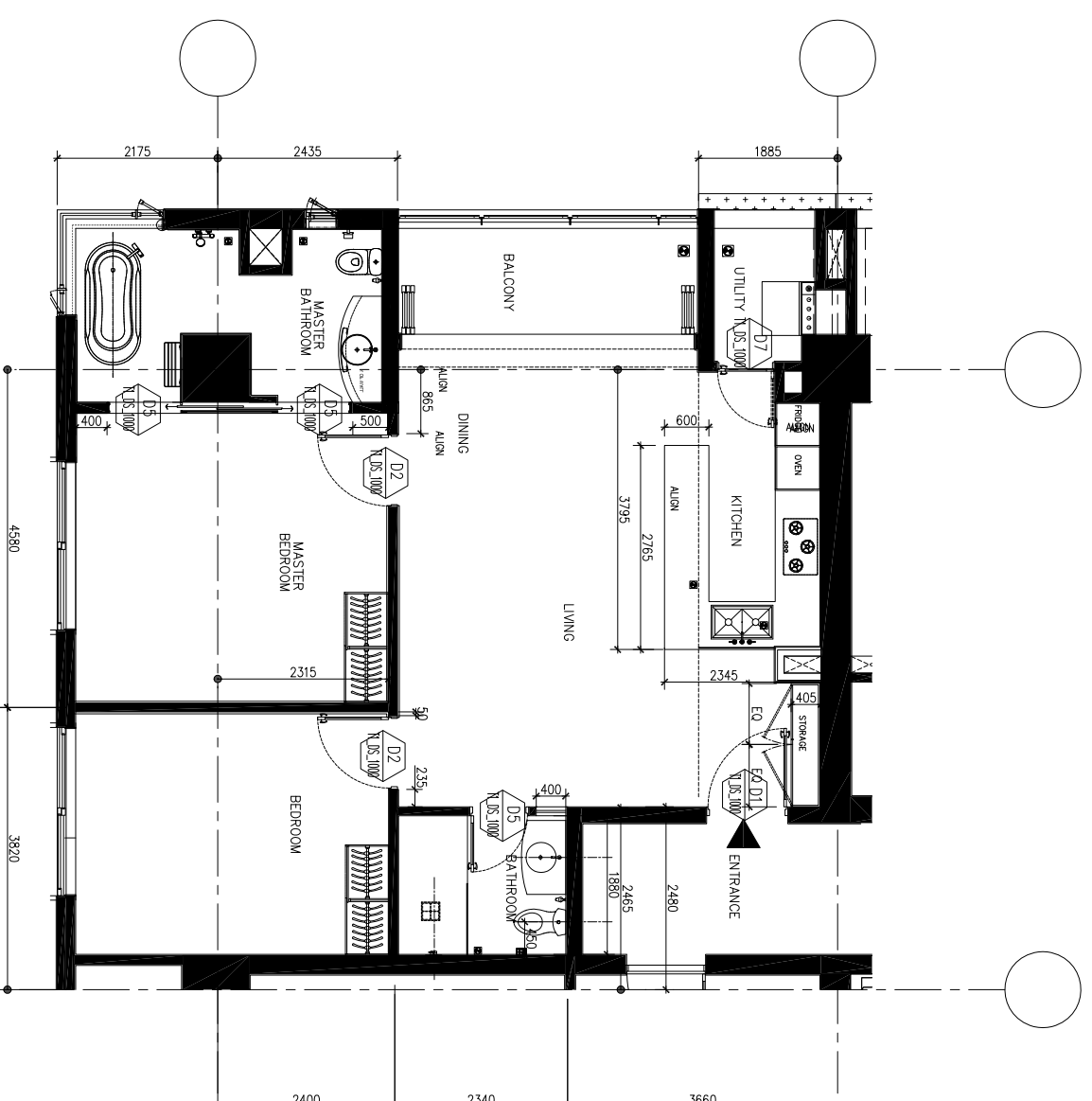
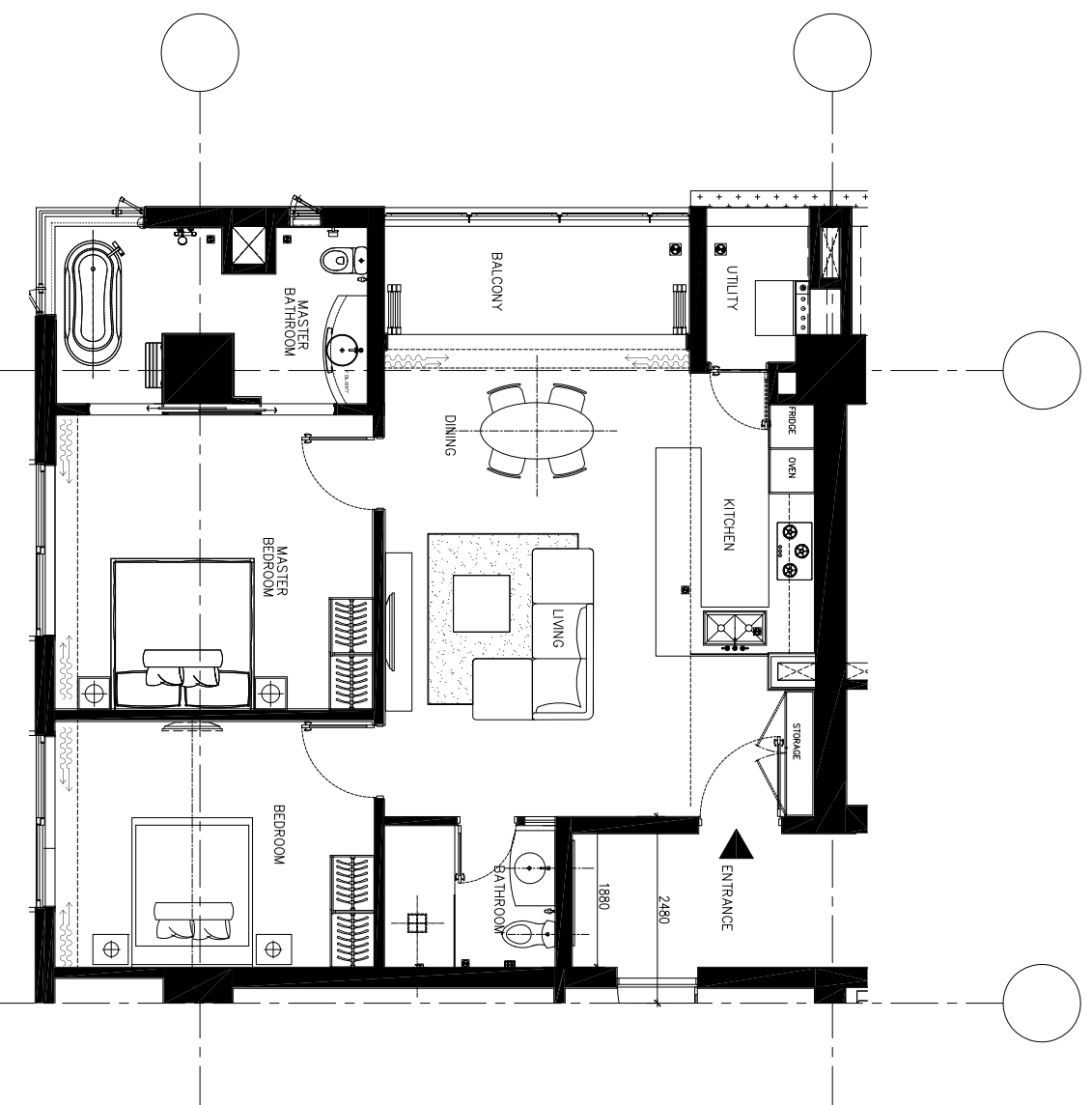
PROJECT PACKAGE NO. DIP-PC-005

TỶ LỆ - SCALE 1:50

NGÀY GIẢI - ISSUE DATE APRIL 2011

DRAWING NO. 4008_00_P1_A1

REVISION 3



01
FF
FIXTURE FURNITURE PLAN (FOR REFERENCE ONLY)
Scale 1 : 50 (A1), 1 : 100 (A3)

02
AR
ARCHITECTURAL INFORMATION PLAN
Scale 1 : 50 (A1), 1 : 100 (A3)