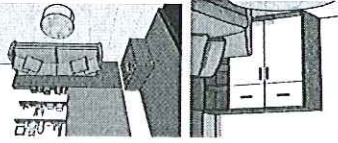
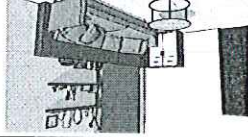
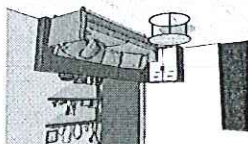



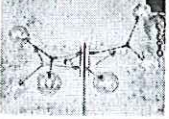
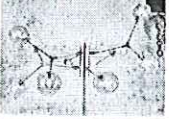



PHỤ LỤC QUYẾT TOÁN NỘI THẤT L1.05 DOCKLAND

APPENDIX FINAL SETTLEMENT OF FURNITURE APARTMENT L1.05 DOCKLAND PROJECT

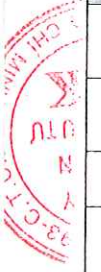
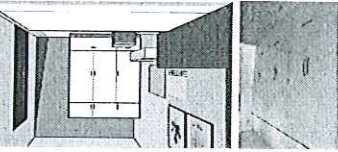
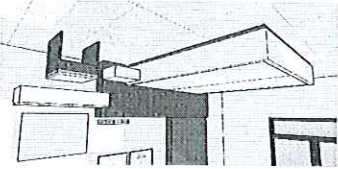
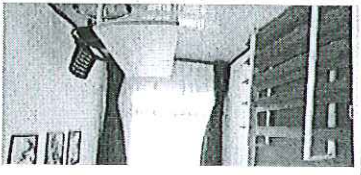
Stt	Item	Image	Description	Before			After			
				Unit	Quantity	Price	Total Amount	Unit	Quantity	Price
A PHÒNG KHÁCH/LIVING ROOM										
1	Kệ giày		MDF Mọc Phai wood, melamine covered surface. - Glossy coating - Accessories included	piece	1	4,800,000	4,800,000	piece	1	4,800,000
2	Bộ ghế sofa		- Solid natural wood oil frame, has been treated with warping termite (color Gray), as sample selected	piece	1	9,800,000	9,800,000	piece	1	9,800,000
3	Bàn Sofa		- Powder coated iron frame - Tempered glass 10mm	set	1	3,300,000	3,300,000	set	1	3,300,000
4	Tủ cố định sofa		- MDF Mọc Phai That wood, melamine covered surface. - Glossy coating - Accessories included	set	1	2,200,000	2,200,000	set	1	2,200,000
5	Kệ TV dưới		- MDF Mọc Phai That wood, melamine covered surface - Glossy coating - Accessories included	md	2	3,300,000	3,300,000	md	2	3,300,000
6	Thanh ngang trang trí TV		- MDF Mọc Phai That wood, melamine covered surface.	md	1.25	700,000	875,000	md	1.25	700,000
7	Đèn chùm		3W COB Led Golden light Included ball	piece	1	2,700,000	2,700,000	piece	1	2,700,000
8	Giấy dán tường		The paper surface is covered with a clean Color: Gray, white	roll	2	1,350,000	2,700,000	roll	2	1,350,000
B PHÒNG BẾP/KITCHENROOM										
1	Bàn ghế ăn		Similar model of Tables and chairsMaterial: Rubber wood Size: 1200*800*750 (Table) Size: 460*560*830 (Chair) - 4 units	set	1	6,600,000	6,600,000	set	1	6,600,000
C PHÒNG NGỦ MASTER/MASTER ROOM										
Total Amount										
Difference										
VND										
Note										



Handwritten initials or signature in blue ink at the top left of the page.






TỔNG (I) EXCLUDING TAX												97,975,000				97,975,000		
1	Tủ áo	MDF anti-moisture MDF Wood Phat, melamine covered surface. -Glossy coating -Accessories included -Included damping hinges, three-level ball rails, premium Ivan handles	1800	600	2750	m2	4.95	3,600,000	17,820,000	1800	600	2730	m2	4.95	3,600,000	17,820,000		
2	Giường	MDF anti-moisture MDF Wood Phat, melamine covered surface, Headboard -Glossy coating -Accessories included	1800	2000	350	piece	1	9,500,000	9,500,000	1890	2040	360	piece	1	9,500,000	9,500,000		
3	Tranh trang trí	- Luxurious, gentle and modern without flaring color, easy to clean - Canvas fabric does not need safety glass for children	700	500		piece	1	600,000	600,000	700	500		piece	1	600,000	600,000		
4	Tủ đầu giường	MDF anti-moisture MDF Wood Phat, melamine covered surface. -Glossy coating -Accessories included	400	400	450	piece	1	2,000,000	2,000,000	400	350	360	piece	1	2,000,000	2,000,000		
5	Nệm	- Has smoothness, elasticity, good toughness, drains heat and supports the spine well - There is an air vent system that easily	1800	2000	100	set	1	4,500,000	4,500,000	1800	2000	100	set	1	4,500,000	4,500,000		
6	Cà nệm	Material: 40s cotton seasoned, soft, cool, luxurious	1800	2000	10	piece	1	1,320,000	1,320,000	1800	2000	10	piece	1	1,320,000	1,320,000		
7	Gối	Cotton material, smooth, soft, very comfortable and gentle, feeling soaring	600	400		set	1	560,000	560,000	600	400		set	1	560,000	560,000		
8	Bàn trang điểm	- MDF Moe Phat wood, melamine covered surface. -Glossy coating -Accessories included	1000	450	150	piece	1	3,200,000	3,200,000	1000	450	150	piece	1	3,200,000	3,200,000		
9	Giường xích	The back of the mattress creates comfort and Chair legs are made from stainless steel	480	810	400	piece	1	700,000	700,000	480	450	900	piece	1	700,000	700,000		
10	Giống bàn trang điểm	Leather-covered mirror material				piece	1	800,000	800,000				piece	1	800,000	800,000		
11	Rèm	Material: light-resistant fabric, smooth fabric, thick, not fading				md	3	1,200,000	3,600,000				md	3	1,200,000	3,600,000		
12	Giấy dán tường	Space to take white and gray is a very simple but modern theme Color: Gray, white	15600	1060		roll	1	1,200,000	1,200,000	15600	1060		roll	1	1,200,000	1,200,000		
D PHÒNG ĐỌC SÁCH/ READING BOOK ROOM																		
1	Tủ sách	-MDF Moe Phat wood, melamine covered surface. -Glossy coating -Accessories included	1500	350	2000	piece	1	3,300,000	3,300,000	1500	350	2000	piece	1	3,300,000	3,300,000		
2	Bàn làm việc	-MDF Moe Phat wood, melamine covered surface. -Glossy coating	1200	700	750	piece	1	4,100,000	4,100,000	1200	700	750	piece	1	4,100,000	4,100,000		
3	Giường làm việc	The back of the mattress creates comfort and Chair legs are made from stainless steel	480	810	400	piece	1	1,000,000	1,000,000	480	960	490	piece	1	1,000,000	1,000,000		
4	Tranh trang trí	- Luxurious, gentle and modern without flaring color, easy to clean - Canvas fabric does not need safety glass for children	700	500		piece	1	600,000	600,000	700	500		piece	1	600,000	600,000		
5	Rèm	Material: light-resistant fabric, smooth fabric, thick, not fading				m2	3.00	1,200,000	3,600,000				m2	3.00	1,200,000	3,600,000		
TOTAL (I)																		



Handwritten signature or initials in blue ink.



STT	Mô tả hàng hóa (Tên hàng, thương hiệu, số lượng, đơn vị tính)	Hình ảnh	Số lượng						Giá trị			
			Đơn vị	Đơn vị	Đơn vị	Đơn vị	Đơn vị	Đơn vị	Giá trị (VNĐ)	Giá trị (VNĐ)		
1	Đèn áp trần (Living room + Bedroom) - Led panel white, Brand: MPE, 12W - Ø170mm x 35mm		170	170	35	10	10	300,000	3,000,000	3,000,000	-	
2	Smart TV (Living room)					1	1	6,800,000	6,800,000	6,800,000	-	
3	Air conditional (Living room)					1	1	18,000,000	18,000,000	18,000,000	-	
4	Air conditional (Bed room)					1	1	11,000,000	11,000,000	11,000,000	-	
5	Tủ lạnh Refrigerator					1	1	6,000,000	6,000,000	6,000,000	-	
6	Máy giặt Washing machine					1	1	4,500,000	4,500,000	4,500,000	-	
			<b>TOTAL (2)</b>						<b>49,300,000</b>	<b>49,300,000</b>	<b>49,300,000</b>	<b>-</b>
			<b>TOTAL (1)+(2)</b>						<b>147,275,000</b>	<b>147,275,000</b>	<b>147,275,000</b>	<b>-</b>

Bên bán giao (bên B) đã bàn giao lại toàn bộ các hàng mục nội thất dùng theo tiêu chuẩn và đầy đủ theo biên bản quyết toán này và được sự đồng ý của bên nhận (bên A). Biên bản này được lập thành 2 bản, mỗi bên giữ 1 bản /

Handover (Party B) has handed over all the furniture item in accordance with standards and complete minutes of the settlement and the consent of the person (Party A). This minutes are made in 2 copies, each party keeps 1 copy /

HCM, 07th September 2019

REPRESENTED BY A  
(Sign and seal)

*(Handwritten signature)*

REPRESENTED BY B  
(Sign and seal)



