



Resale C-xx.01

Size: 00 m2 | 00 m2 | 02 Bed

Price: 622,318 USD

The Metropole Thu Thiem

Code	RS20220618	Handover	
Building	The Crest Residence	Handover Condition	Bare
No. of floor	0	Ownership	LTL for foreigner
Floor	Middle	Status	Under - construction
Unit No	01	Direction	
Bedrooms	02	View	
Bathrooms	00		

A. ORIGINAL PRICE (USD)	
Total Price(VAT, MF)	497,502
VAT	0
Maintenance Fee	0
Unpaid Amount (1)	253,193
Paid Amount	244,309
B. RESALE PRICE (USD) (2)	
Fees and charges	Include
C. BUYER'S PRICE (3)	
	369,125



TIEN NGUYEN
 Phone: 093 113 1822
 Email: support@vnkic.com

PROPLINK
 32 Tran Luu Street, An Phu Ward, Thu Duc City, Ho Chi Minh City, Vietnam

THE MET Thu Thiem New Urban Area, District 2, HCMC

- (1) Buyer shall pay in the future by payment schedule.
- (2) Buyer shall pay in total.
- (3) Buyer shall pay to Seller.
- Information is for reference only.
- Export date: October 17, 2022 14:53

GENERAL LAYOUT OF PROJECT



LEGEND:

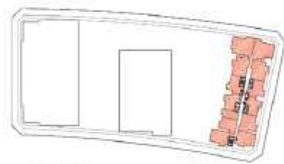
- 1. STREET SIDE DROP-OFF AREA
- 2. ENTRANCE/EXIT
- 3. WATER FEATURE WITH SCULPTURE
- 4. LOBBY WELCOME SPACE
- 5. VENTILATION SHAFT
- 6. BOULEVARD AT RIGHT HAND SIDE OF TOWER
- 7. BOULEVARD AT TOP SIDE OF TOWER
- 8. BOULEVARD AT BOTTOM SIDE OF TOWER
- 9. JOGGING TRACK
- 10. OUTDOOR EVENT LAWN
- 11. OUTDOOR FITNESS TRAIL
- 12. TAI CHI LAWN
- 13. SCULPTURAL GARDEN

APARTMENT LAYOUT

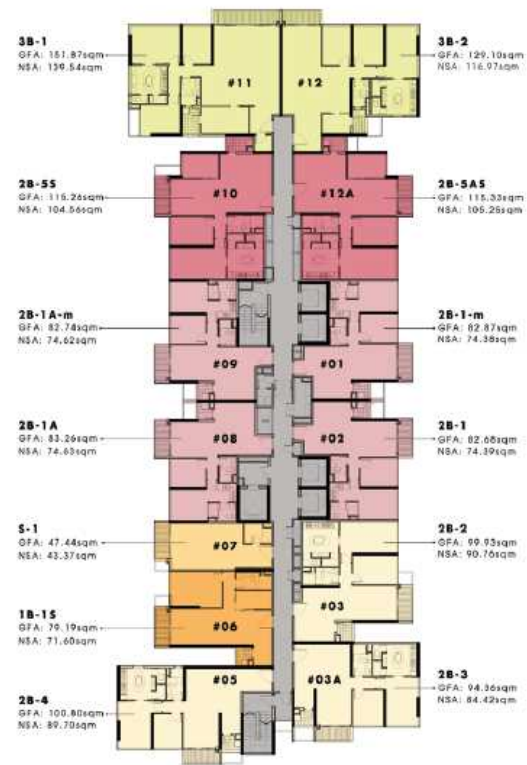
FLOOR PLAN

MẶT BẰNG TẦNG L6-L17

- STUDIO APARTMENT
CĂN HỘ STUDIO
- 1 BEDROOM APARTMENT
CĂN HỘ 1 PHÒNG NGỦ
- 2 BEDROOM APARTMENT
CĂN HỘ 2 PHÒNG NGỦ
- 2 BEDROOM PREMIUM APARTMENT
CĂN HỘ CAO CẤP 2 PHÒNG NGỦ
- 2 BEDROOM+STUDY APARTMENT
CĂN HỘ 2 PHÒNG NGỦ + P. HỌC
- 3 BEDROOM APARTMENT
CĂN HỘ 3 PHÒNG NGỦ
- LIFT / CORRIDOR / M&E
THANG MÁY / HÀNH LANG / CƠ BIÊN



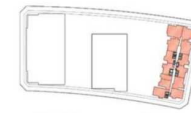
TOWER C
STACK L6 - L17



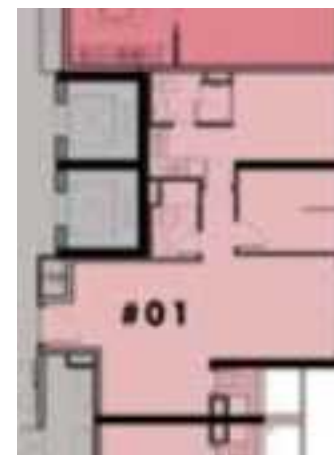
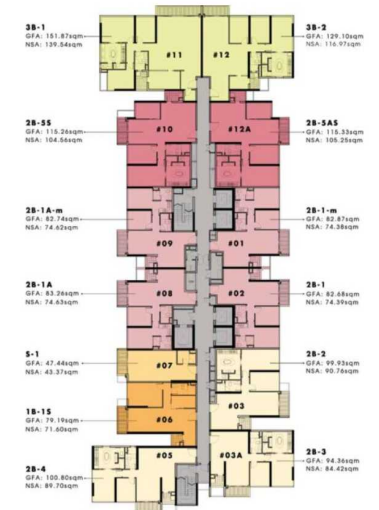
FLOOR PLAN

MẶT BẰNG TẦNG L6-L17

- STUDIO APARTMENT
CĂN HỘ STUDIO
- 1 BEDROOM APARTMENT
CĂN HỘ 1 PHÒNG NGỦ
- 2 BEDROOM APARTMENT
CĂN HỘ 2 PHÒNG NGỦ
- 2 BEDROOM PREMIUM APARTMENT
CĂN HỘ CAO CẤP 2 PHÒNG NGỦ
- 2 BEDROOM+STUDY APARTMENT
CĂN HỘ 2 PHÒNG NGỦ + P. HỌC
- 3 BEDROOM APARTMENT
CĂN HỘ 3 PHÒNG NGỦ
- LIFT / CORRIDOR / M&E
THANG MÁY / HÀNH LANG / CƠ BIÊN



TOWER C
STACK L6 - L17



2B-1-m
GFA: 82.87sqm
NSA: 74.38sqm

APPARTMENT IMAGE & LAYOUT

